

สถานการณ์เชื้อดื้อยาต้านจุลชีพ ปี 2000-2017

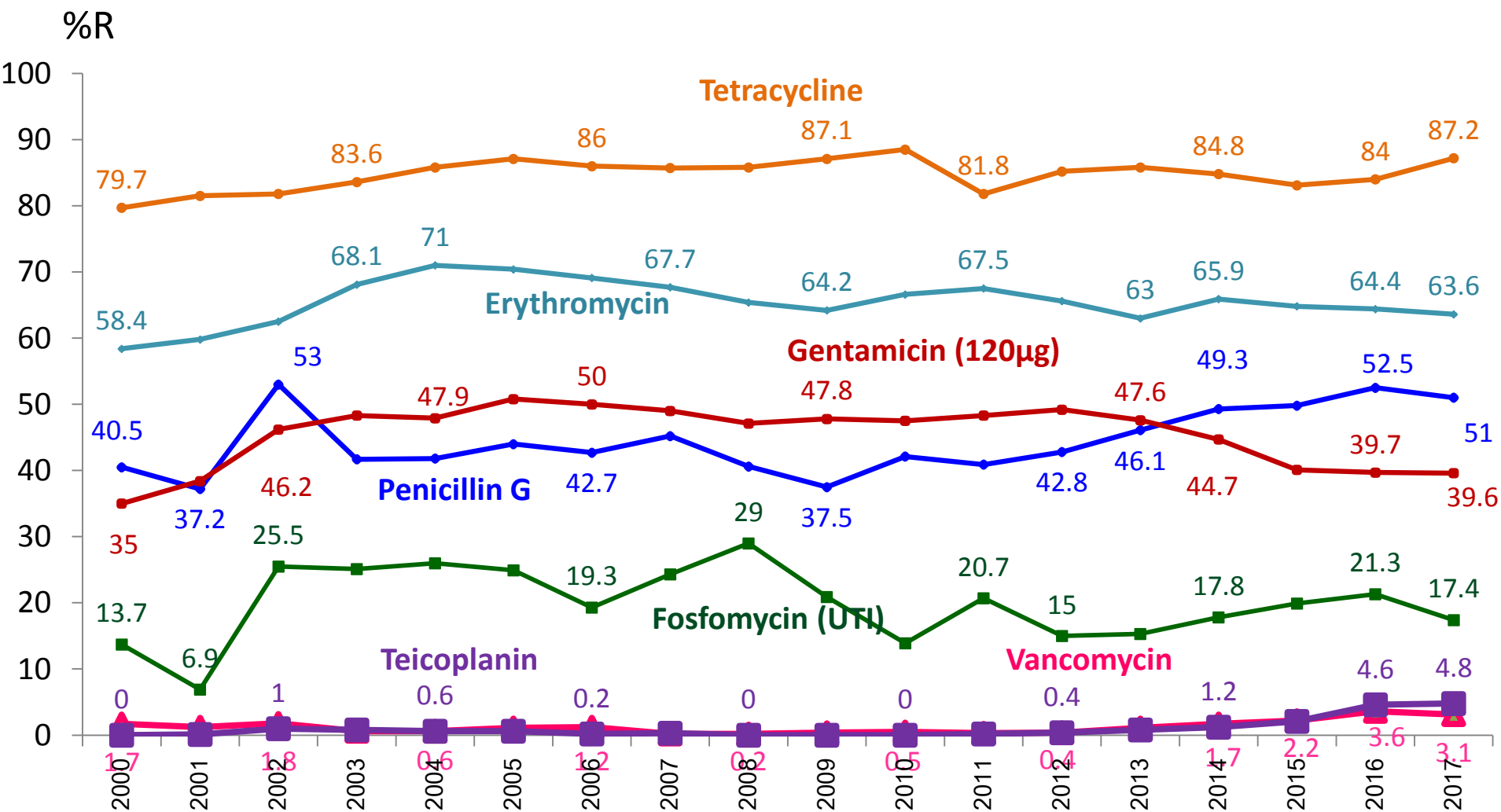
ศูนย์เฝ้าระวังเชื้อดื้อยาต้านจุลชีพแห่งชาติ (NARST)

<http://narst.dmsc.moph.go.th>

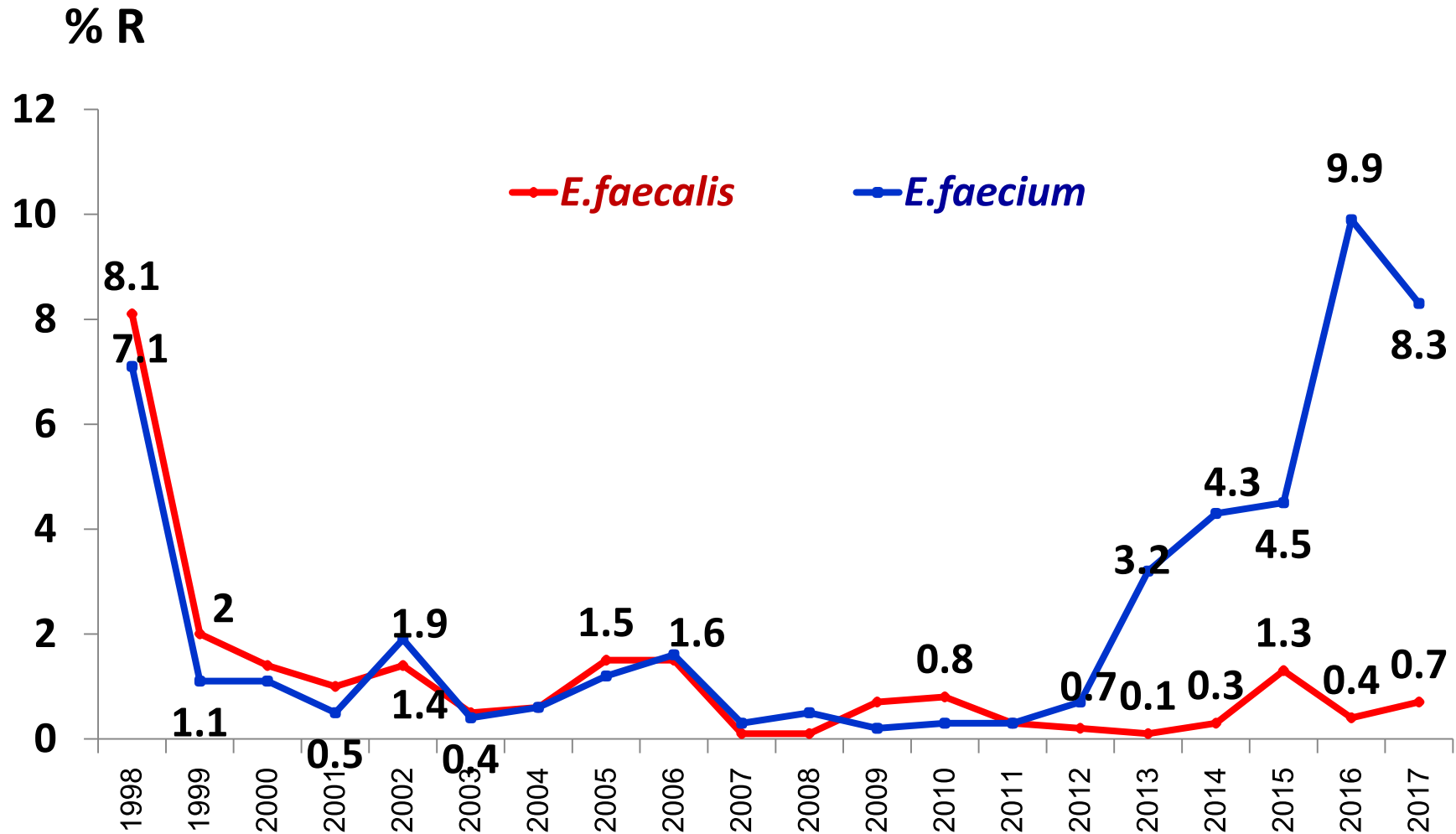
สถาบันวิจัยวิทยาศาสตร์สาธารณสุข กรมวิทยาศาสตร์การแพทย์

Antimicrobial Resistance rates of *Enterococcus* spp. by year

(NARST- 74 hospitals, 2017)



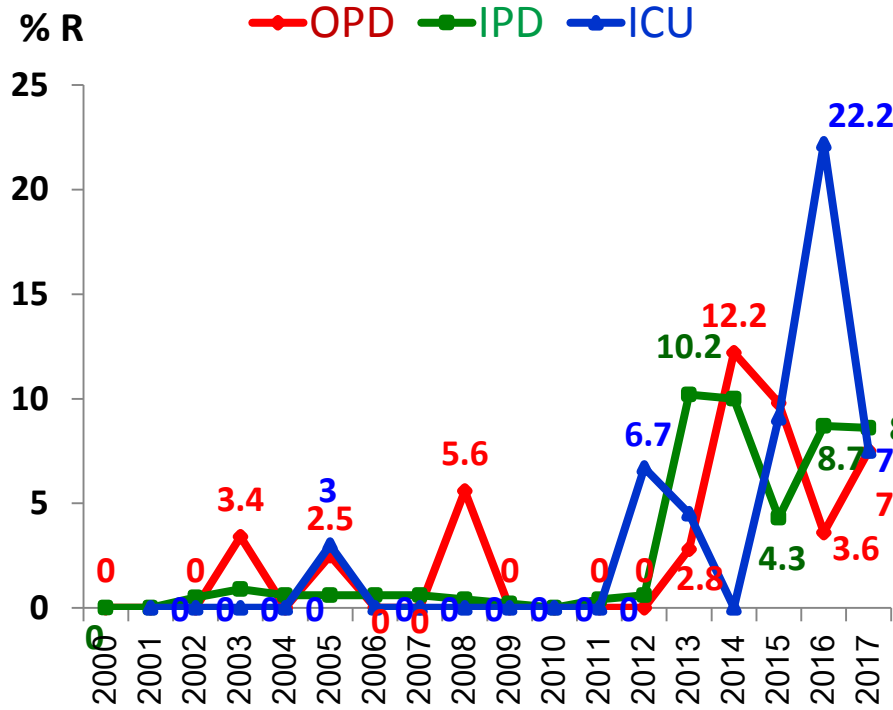
Rate of vancomycin resistant enterococci



NARST data

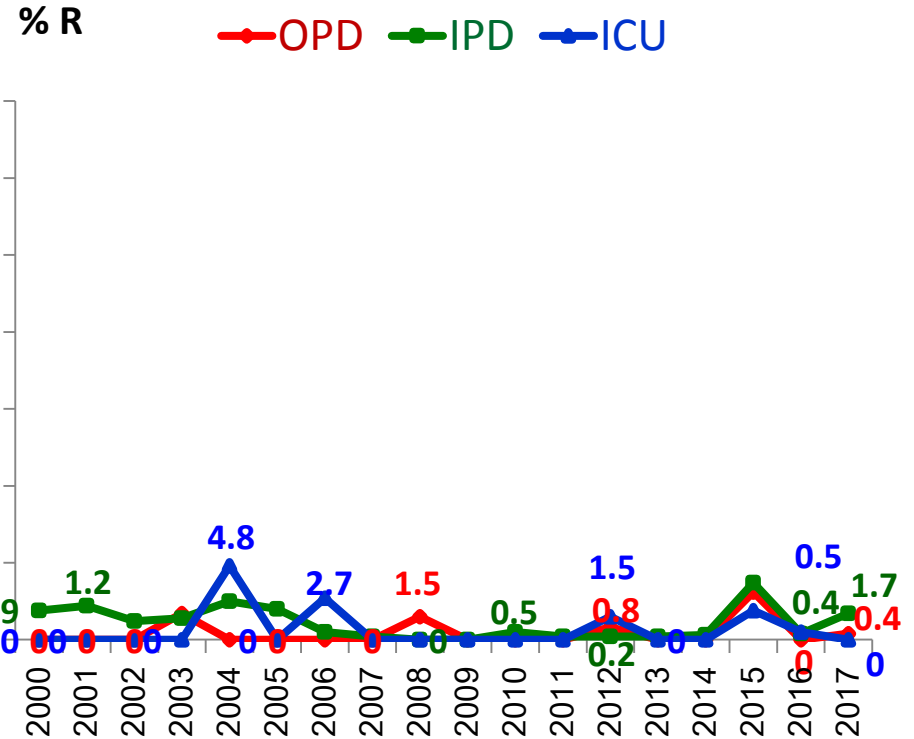
Percent resistance of *E. faecium*, *E. faecalis* to vancomycin

E. faecium



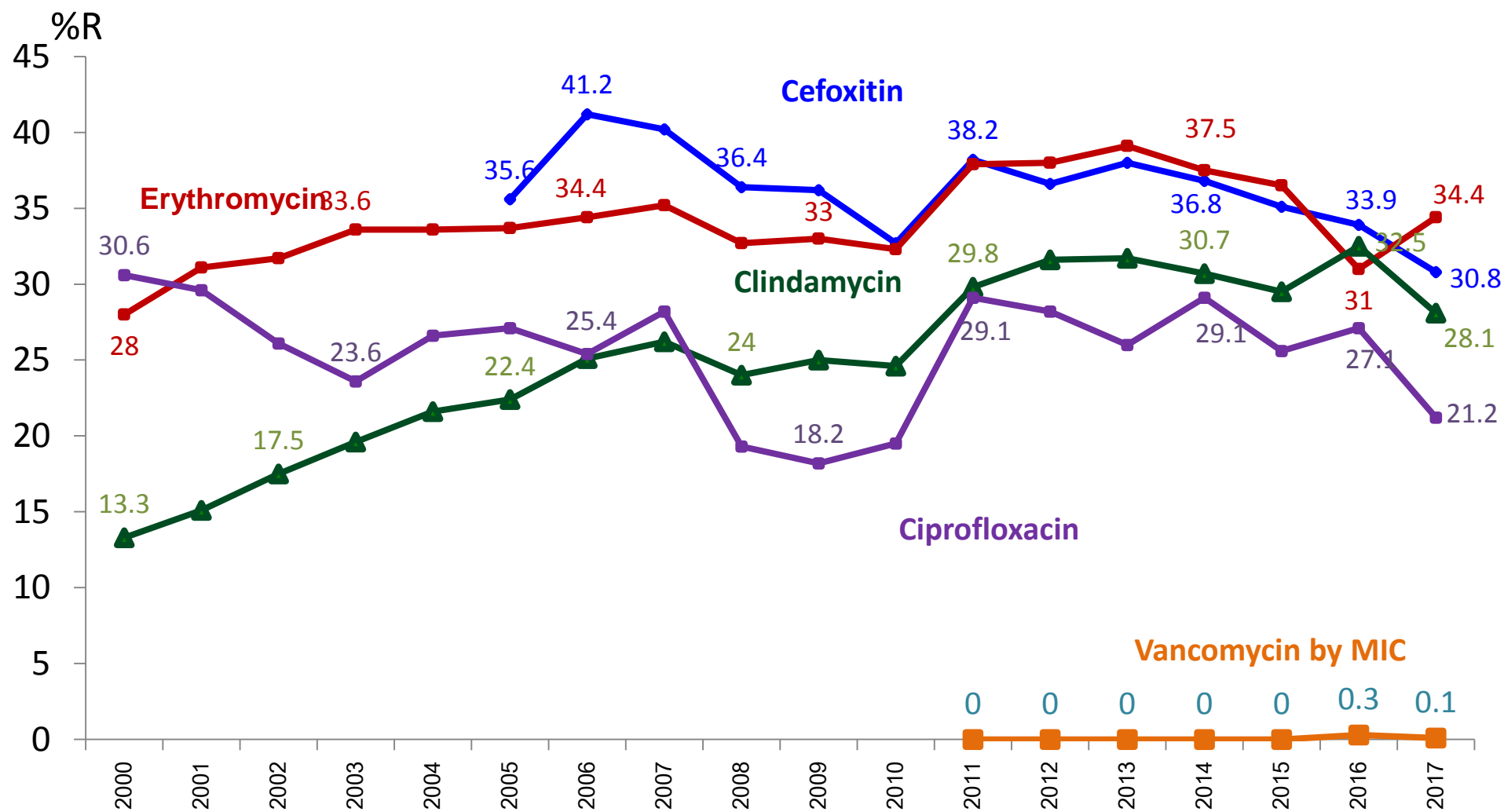
Vancomycin

E. faecalis



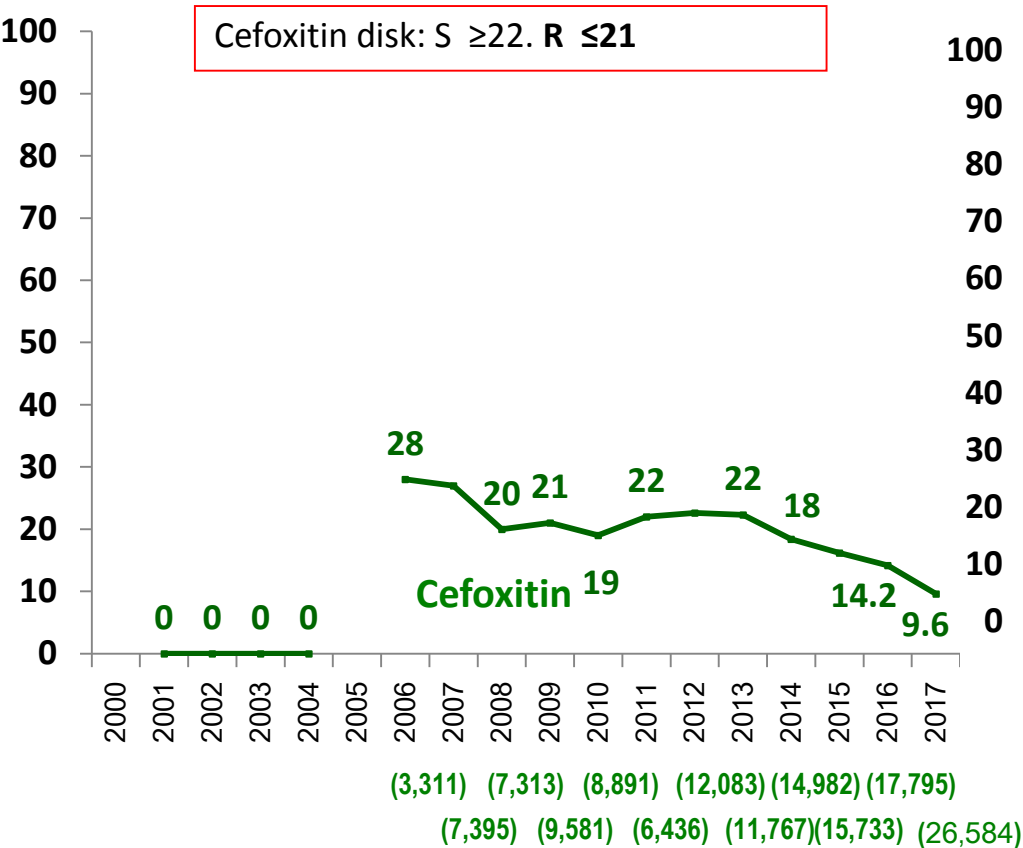
Vancomycin

Antimicrobial Resistance rates of *Staphylococcus spp.* by year (NARST- 74 hospitals, 2017)

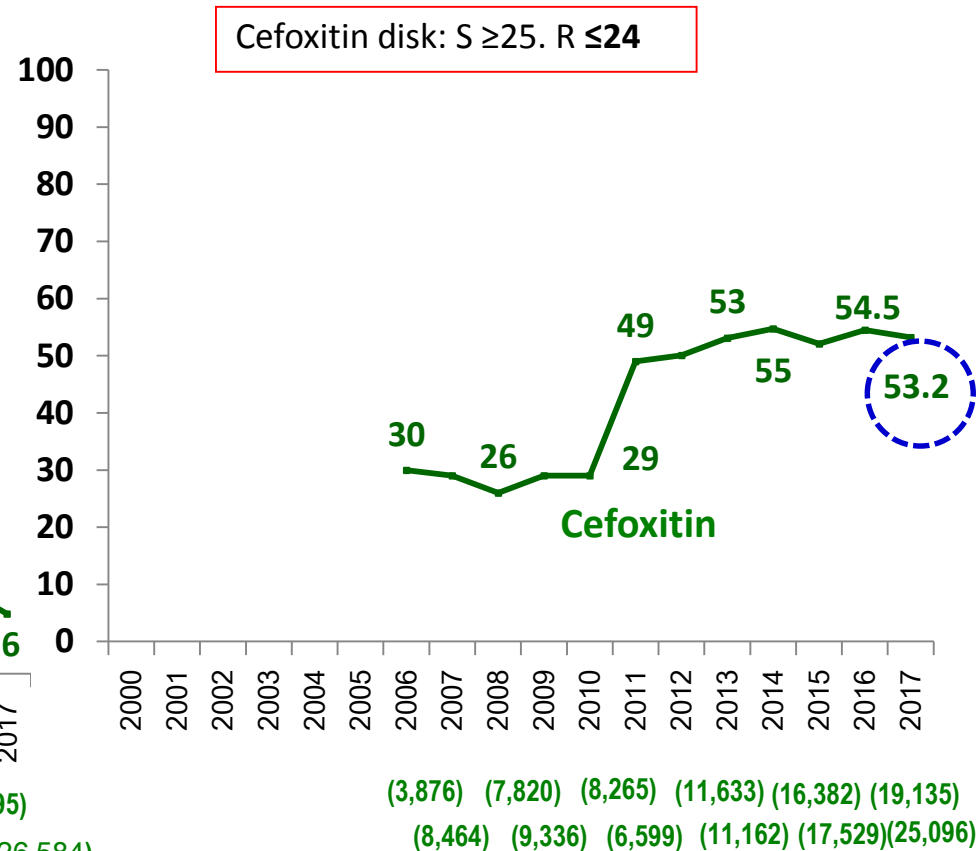


Percent isolates of Methicillin Resistance *S. aureus* (MRSA) and Methicillin Resistance *Staphylococcus* coagulase negative (MRSCN)

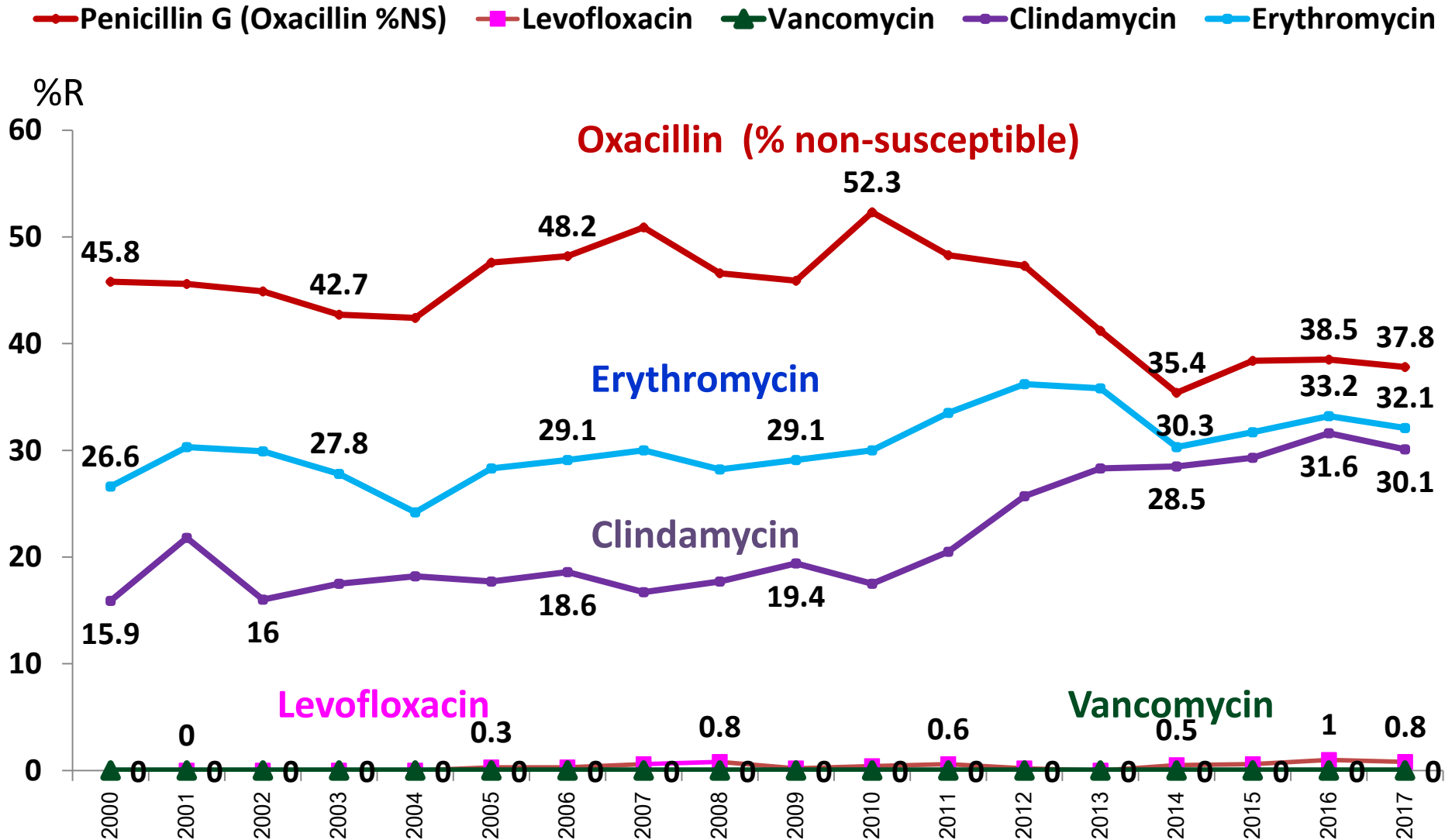
MRSA



MRSCN

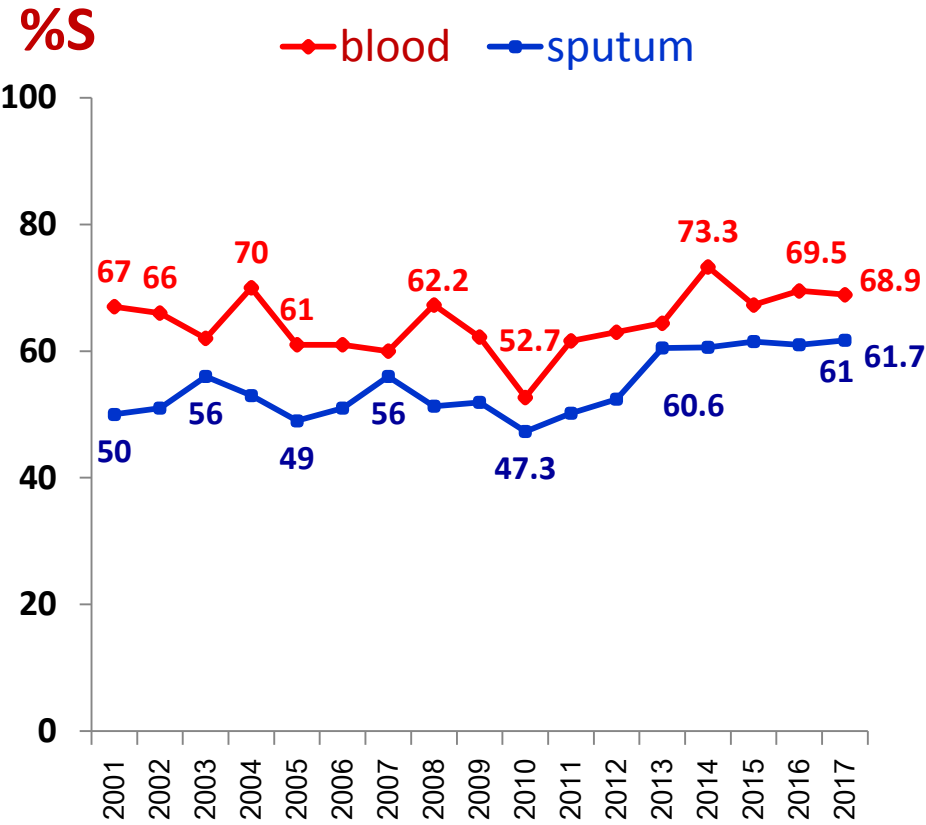


Antimicrobial Resistance rates of *S. pneumoniae* by year (NARST- 74 hospitals, 2017)

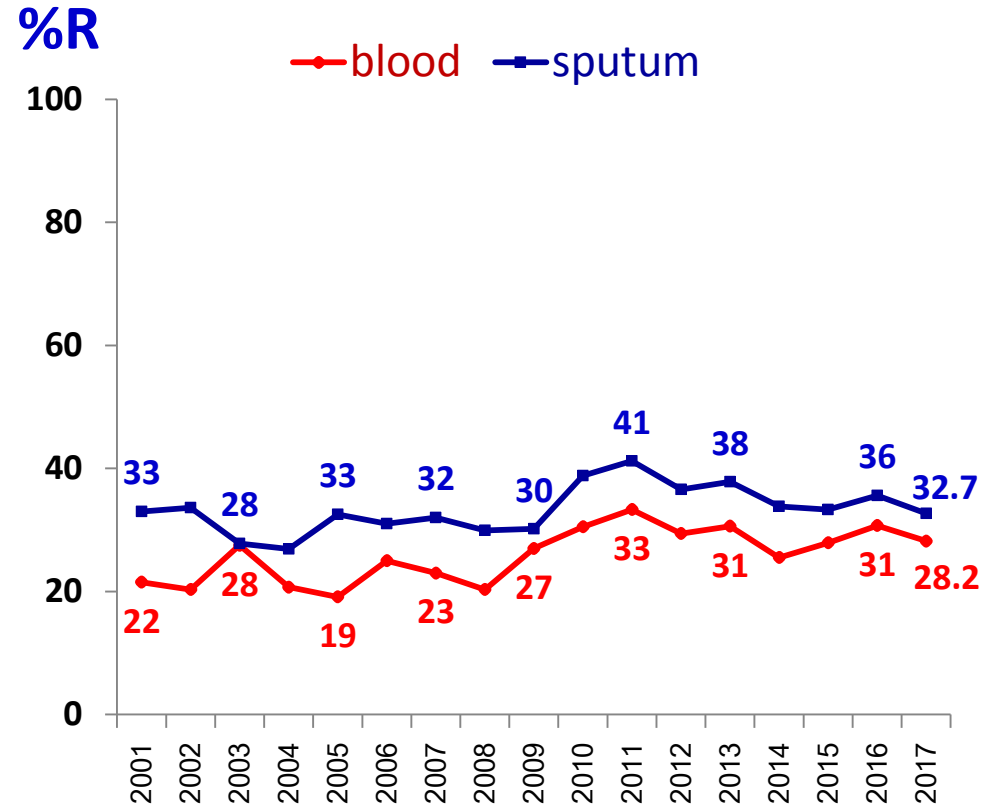


Susceptibility of *S. pneumoniae* by specimen

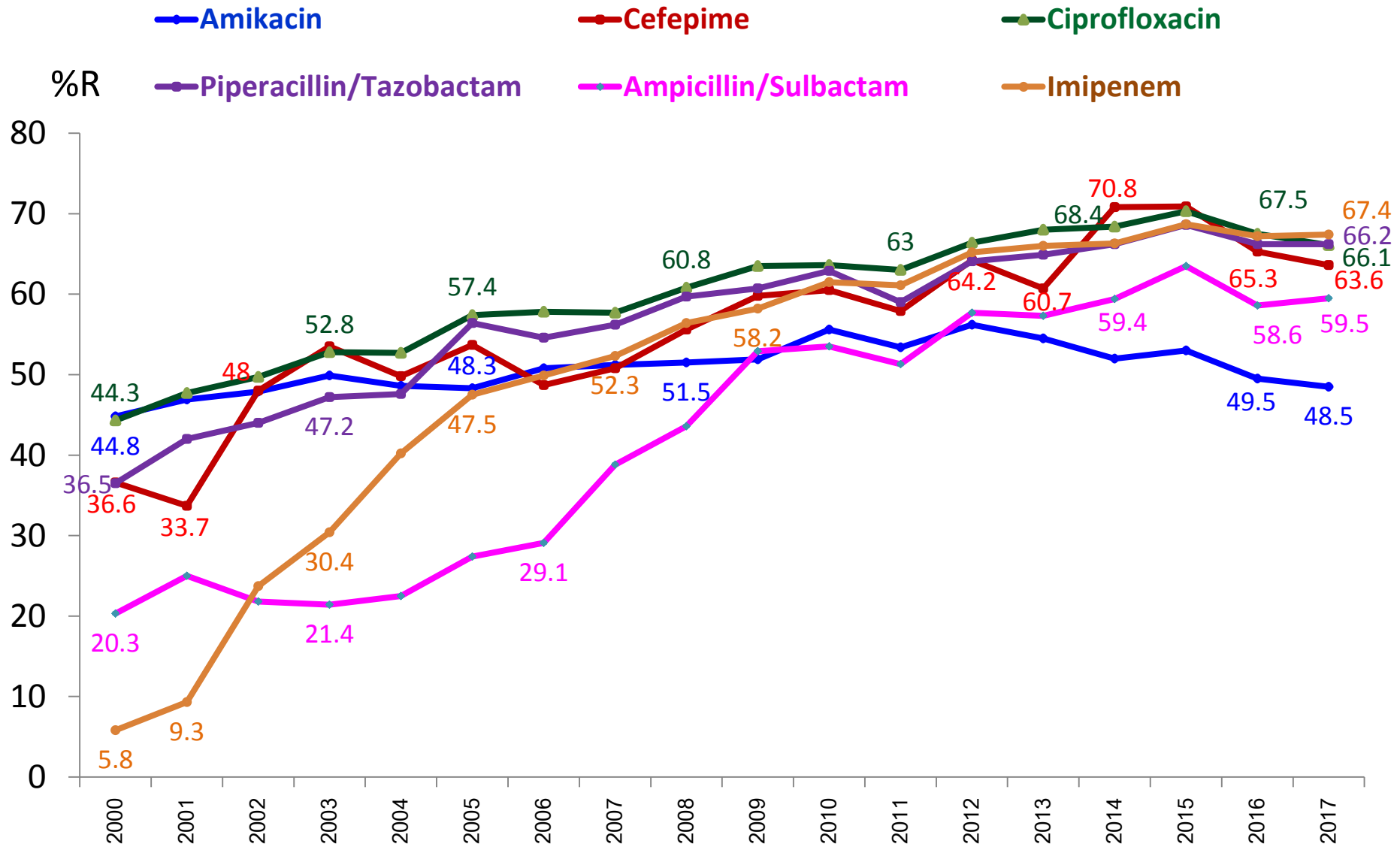
oxacillin



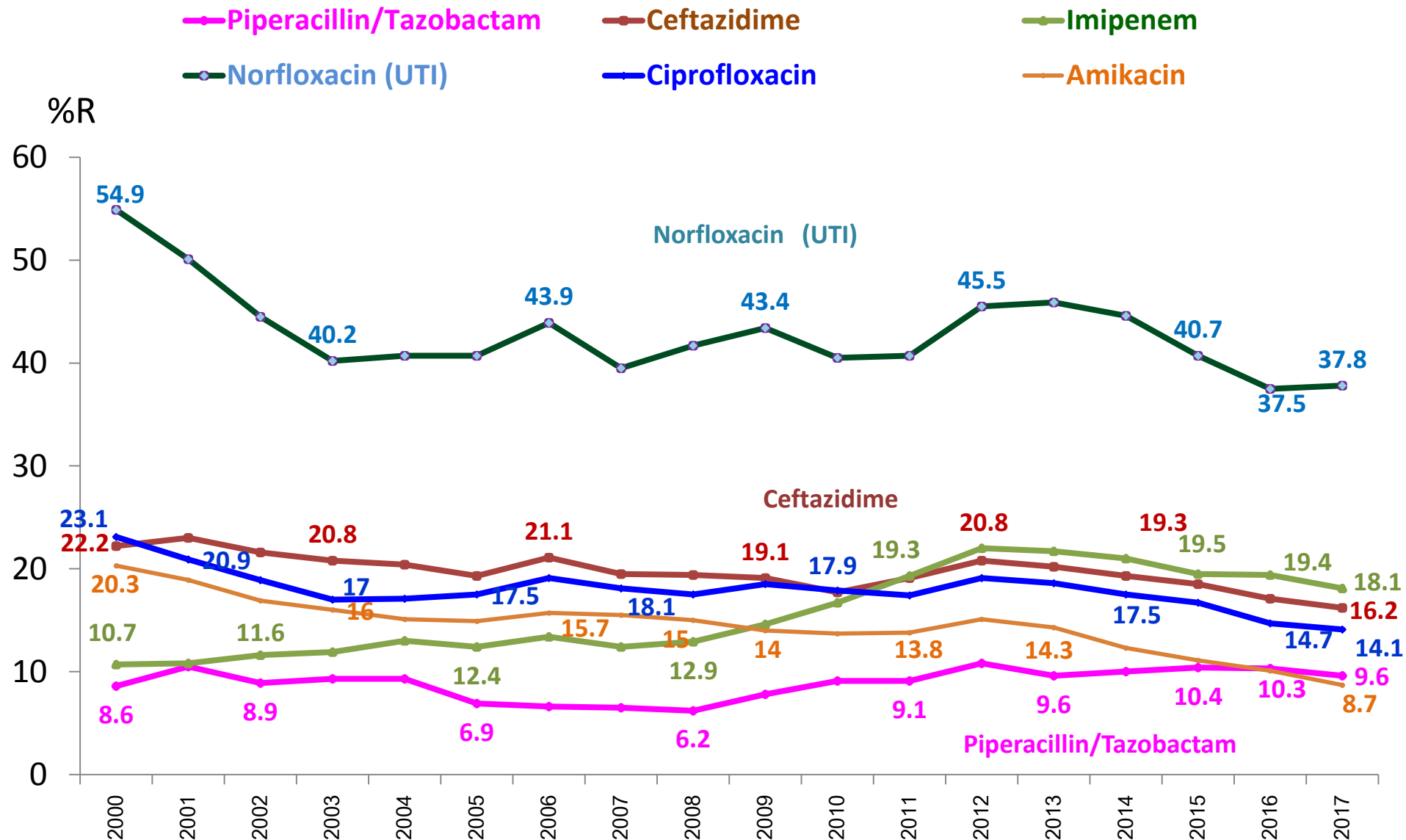
Erythromycin



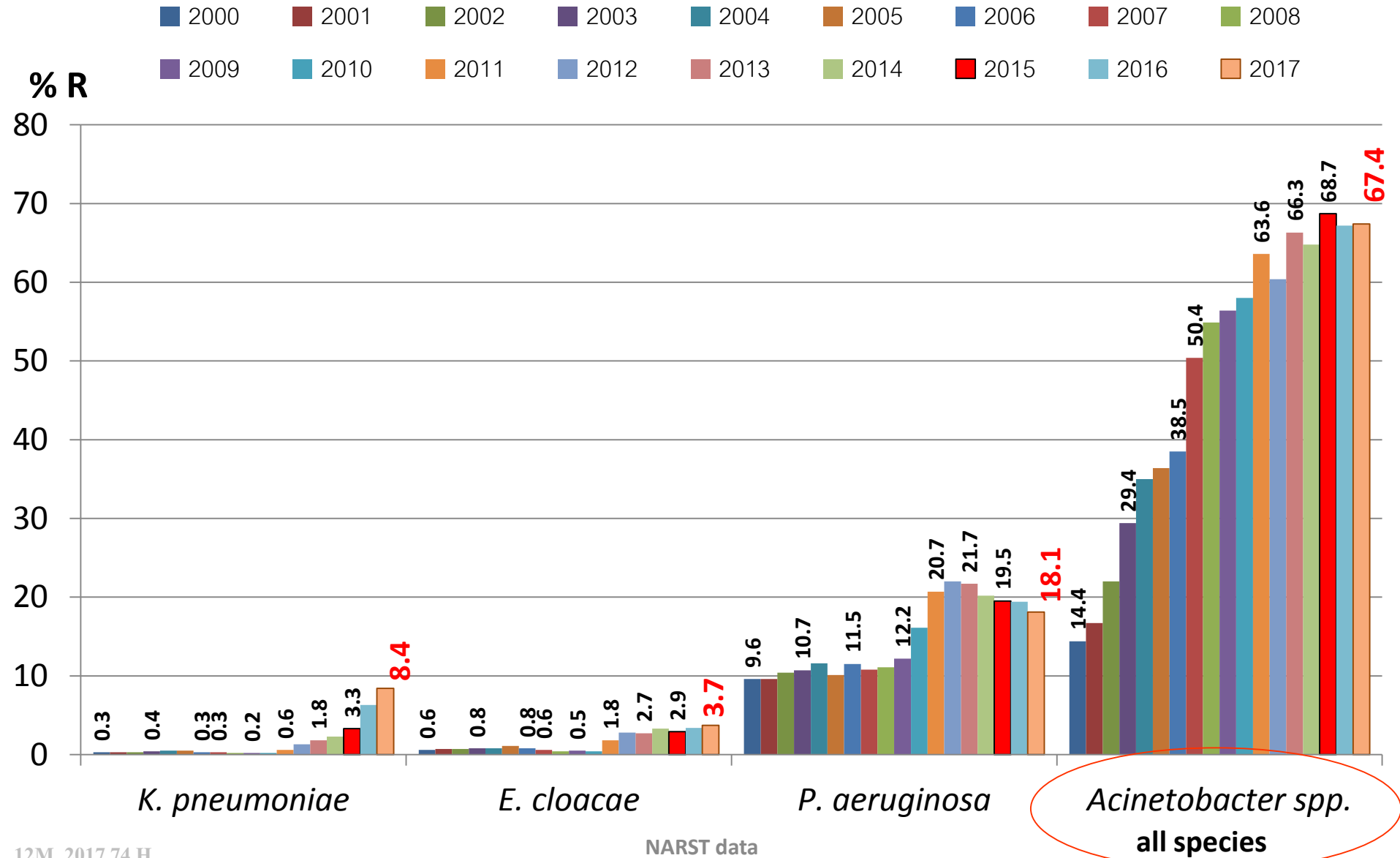
Antimicrobial Resistance rates of *Acinetobacter* spp. by year (NARST- 74 hospitals, 2017)



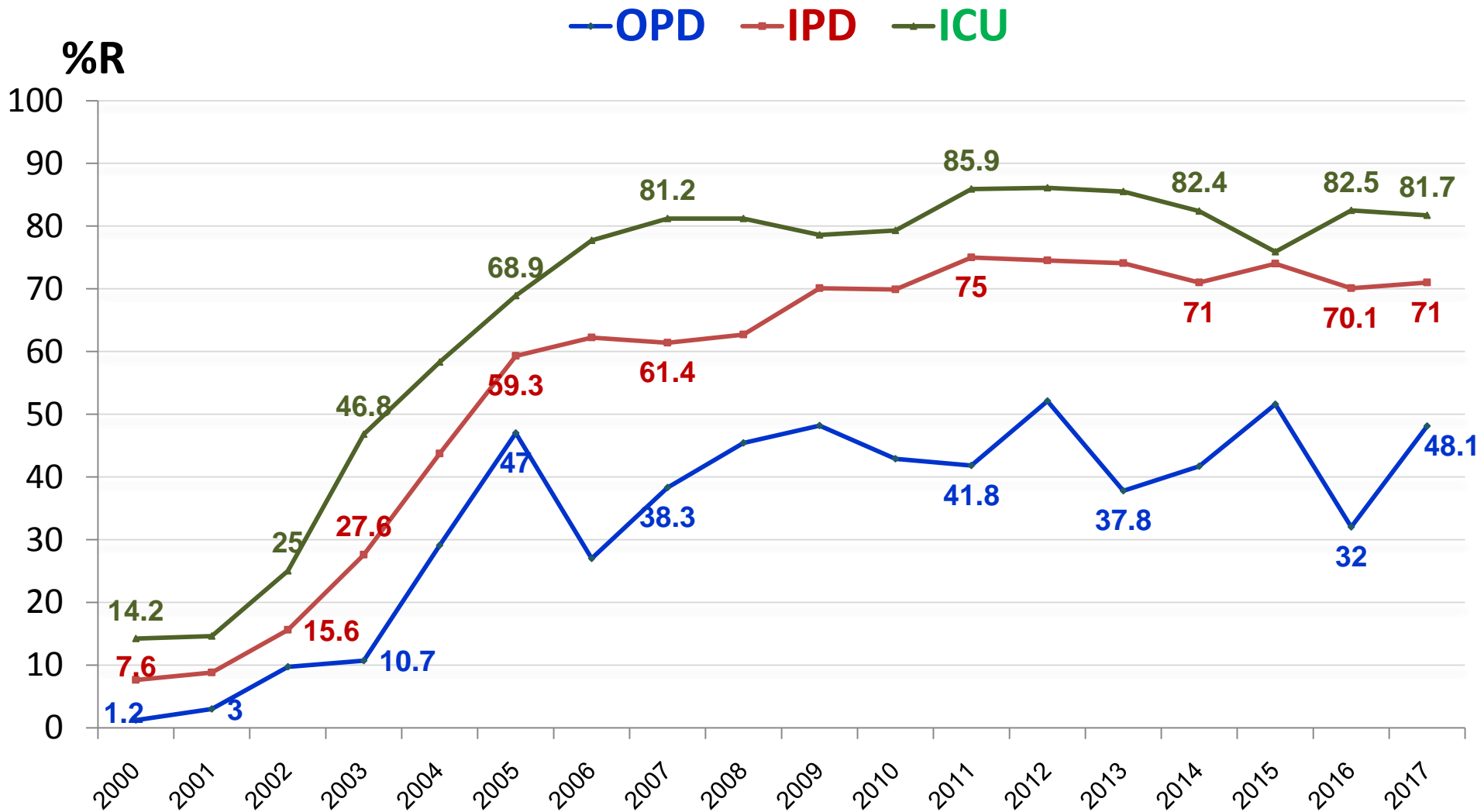
Antimicrobial Resistance rates of *P. aeruginosa* by year (NARST- 74 hospitals, 2017)



Rate of Imipenem Resistant *Acinetobacter* spp.

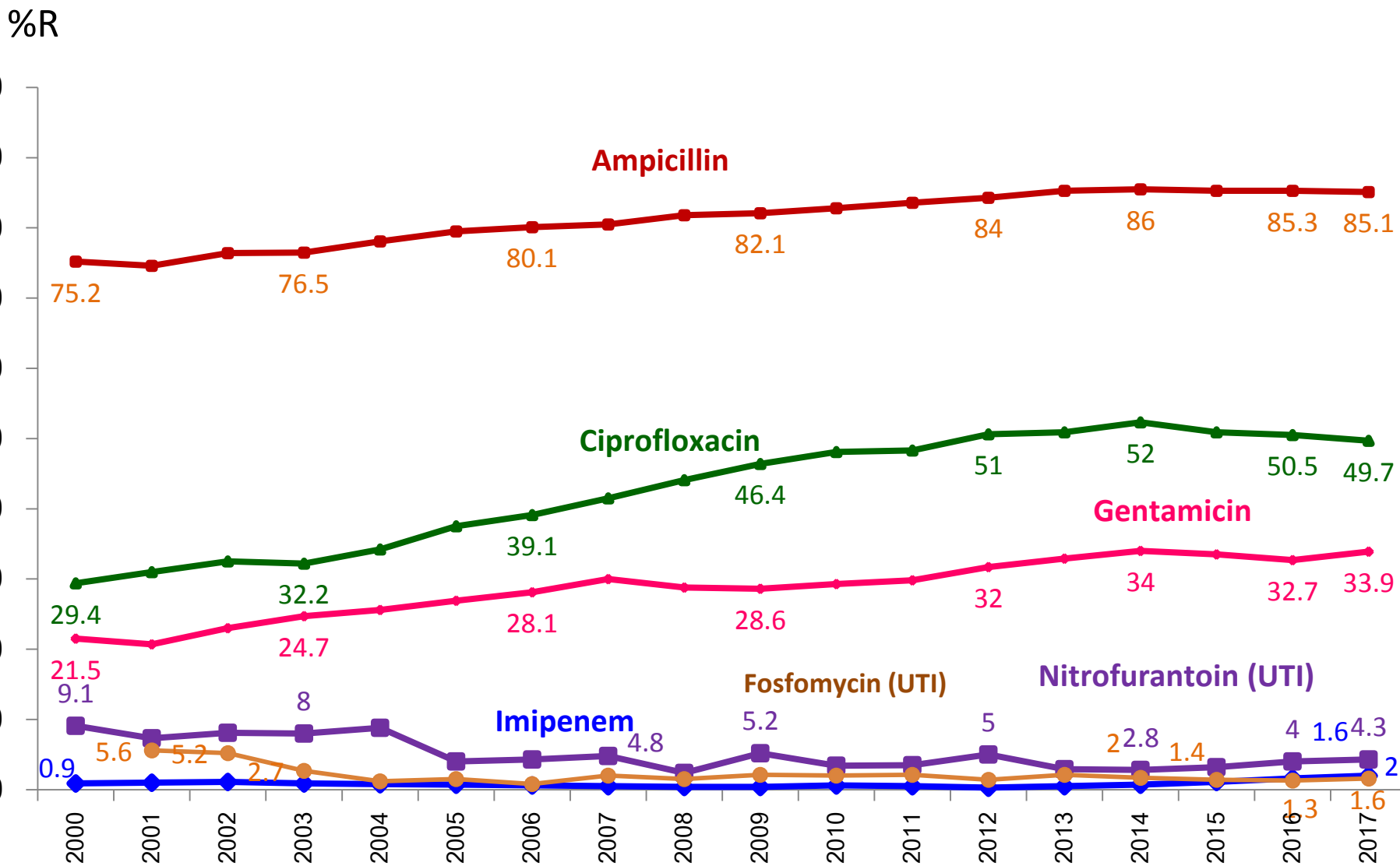


Percent resistance of *A. calcoaceticus*-*baumannii* complex to Imipenem

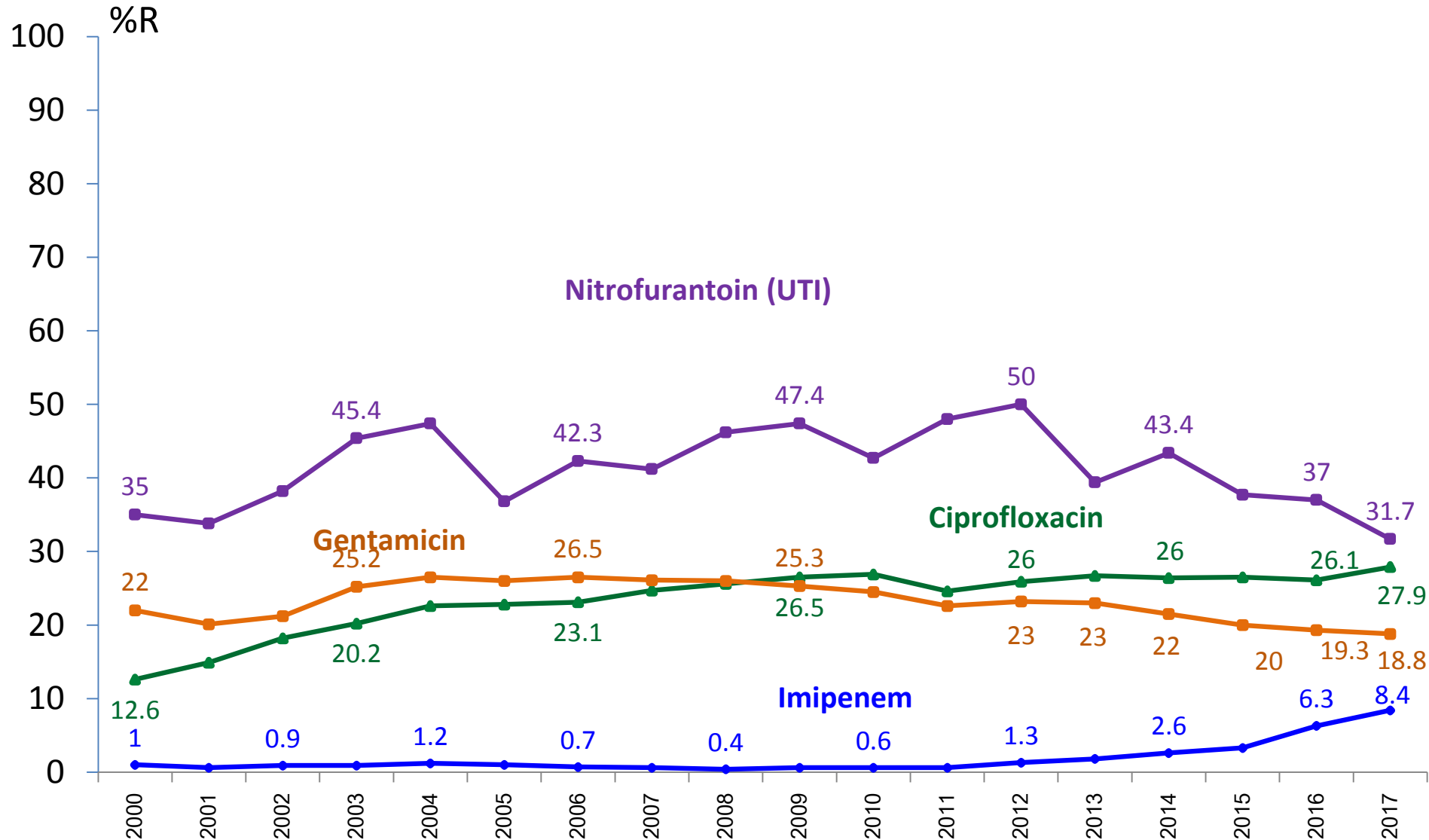


Antimicrobial Resistance rates of *E. coli* by year

(NARST- 74 hospitals, 2017)



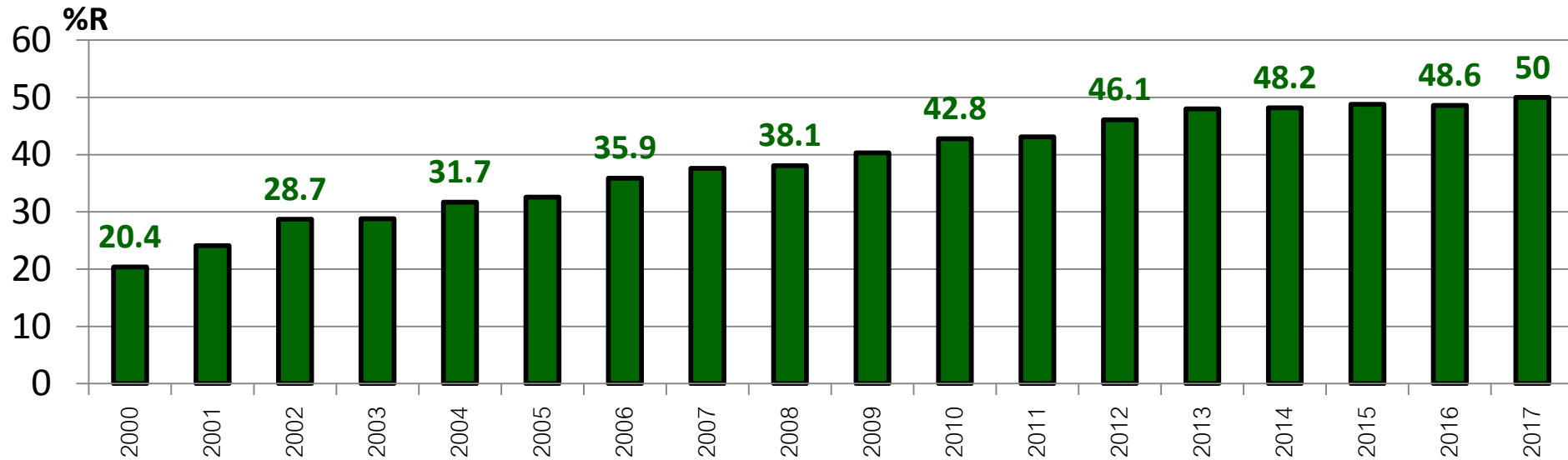
Antimicrobial Resistance rates of *K. pneumoniae* by year (NARST- 74 hospitals, 2017)



ESBL producing *E. coli*

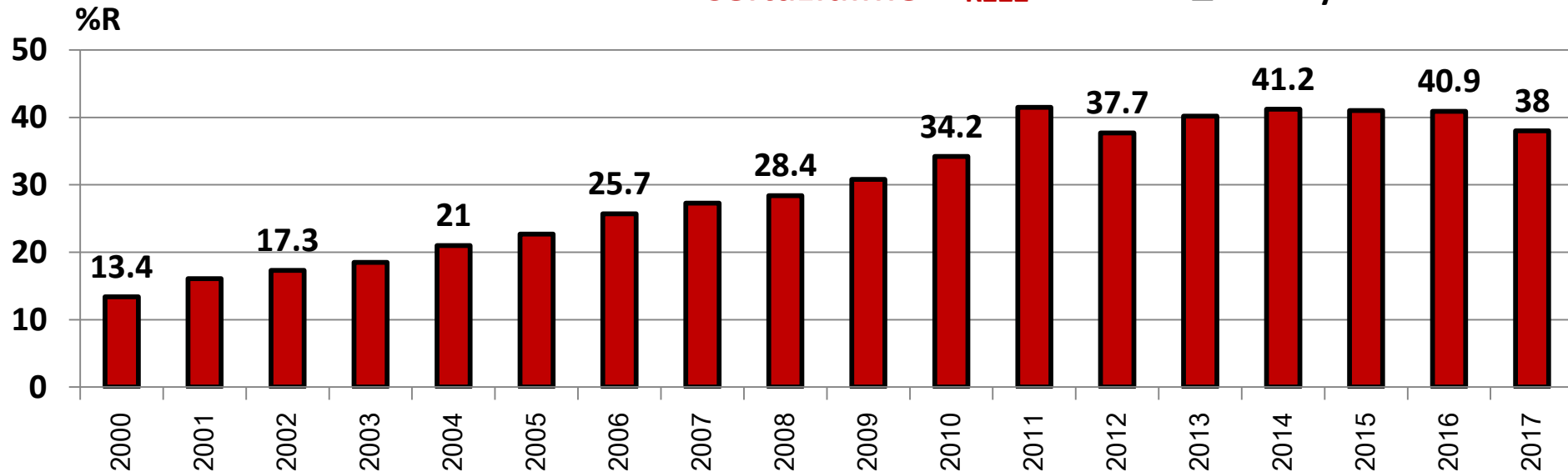
Cefotaxime $R \leq 27$

■ ESBL by screen test



Ceftazidime $R \leq 22$

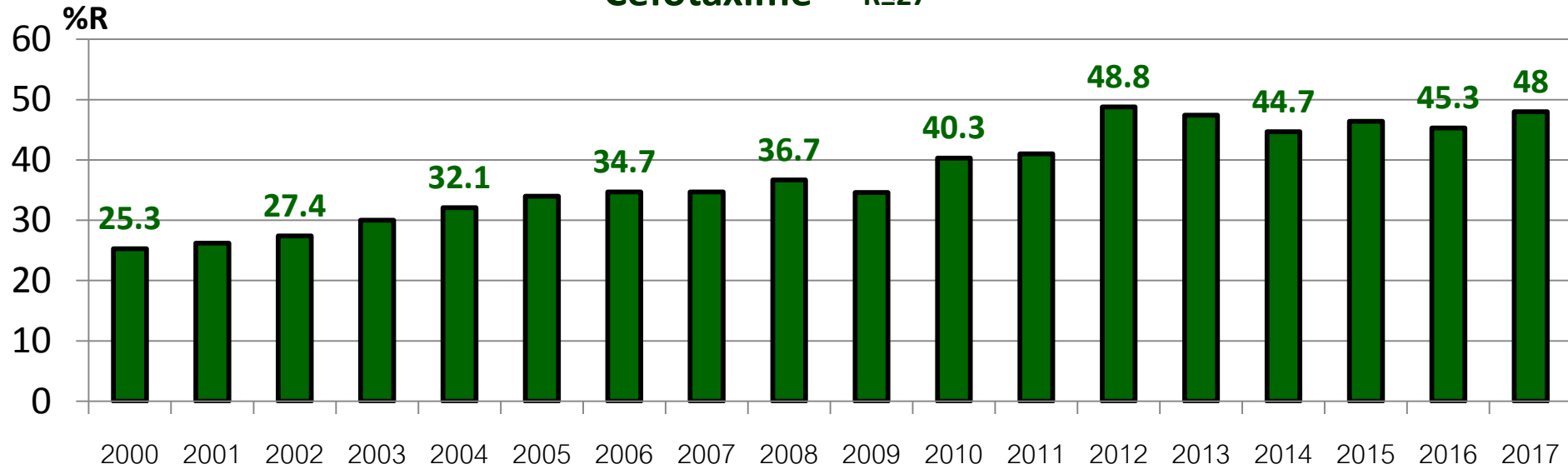
■ ESBL by screen test



ESBL producing *K. pneumoniae*

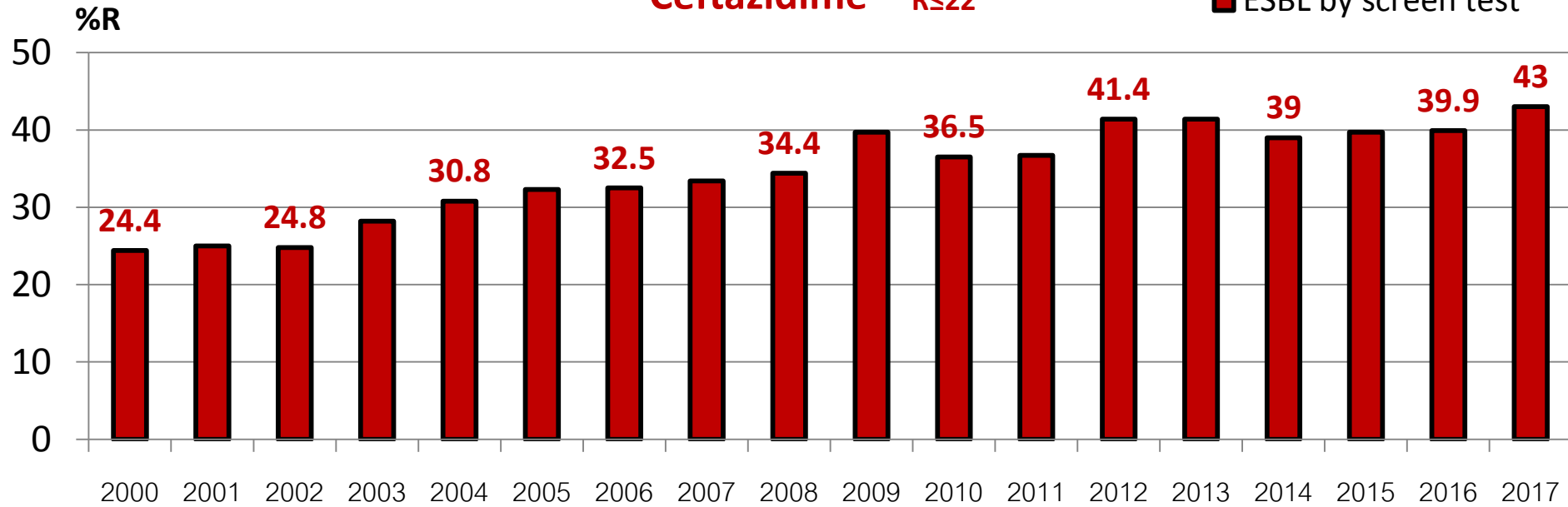
Cefotaxime R_{≤27}

■ ESBL by screen test

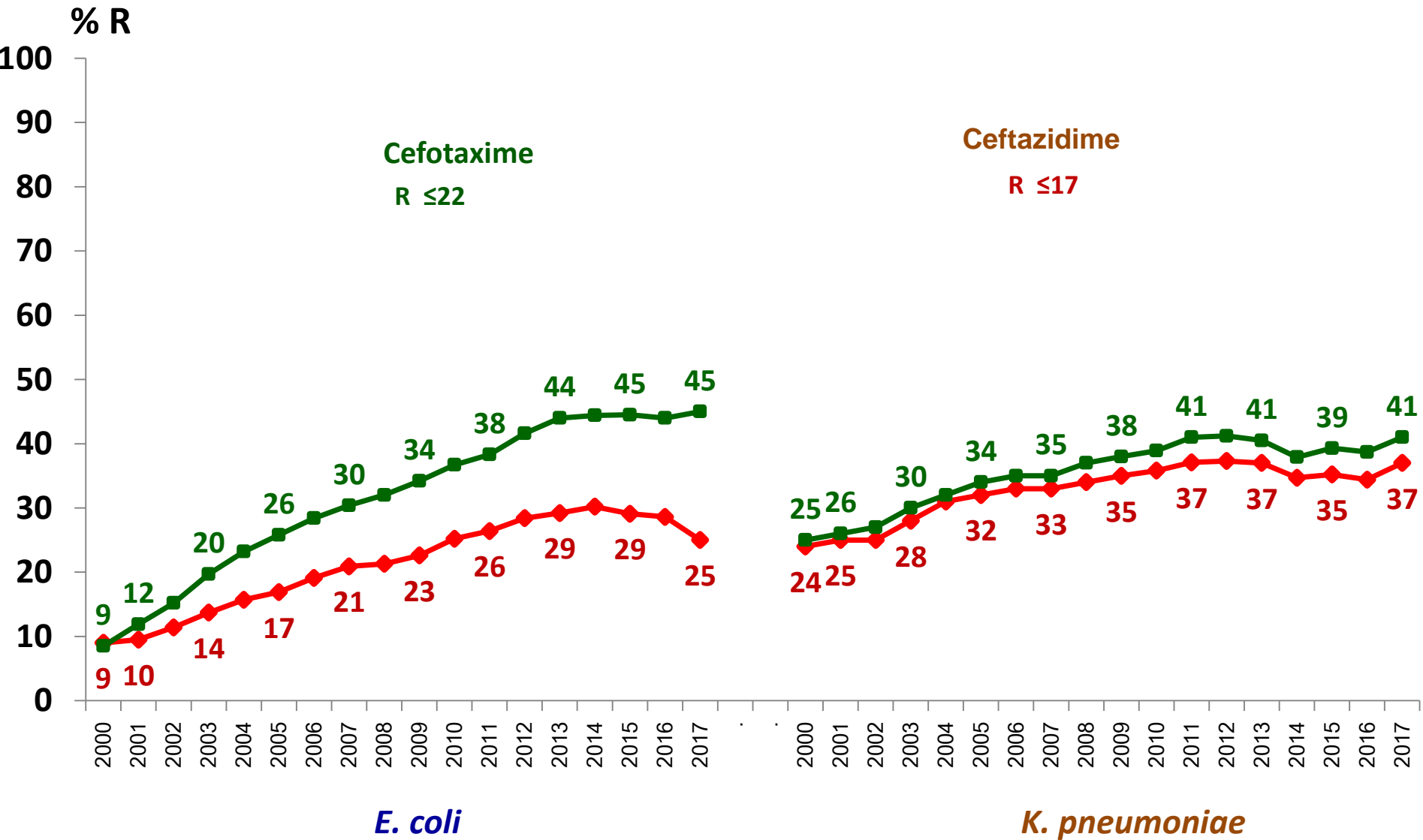


Ceftazidime R_{≤22}

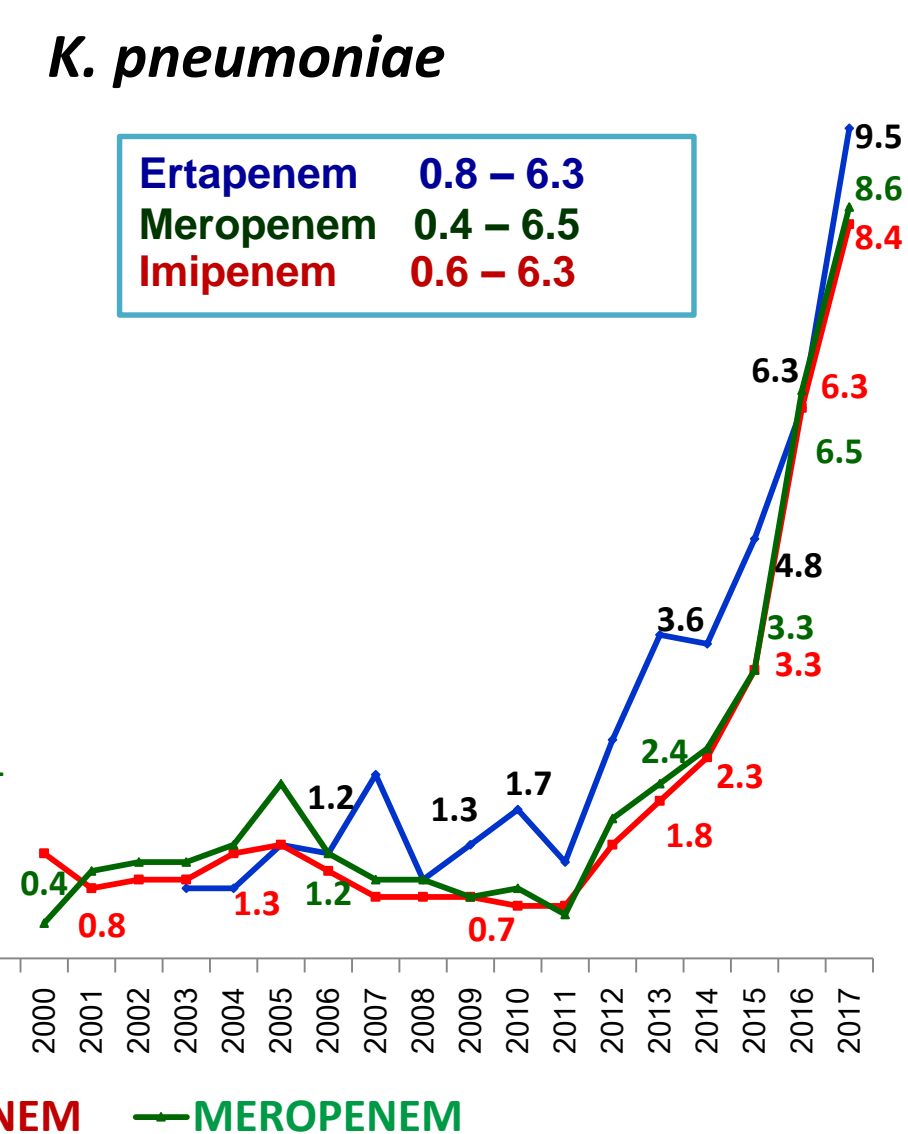
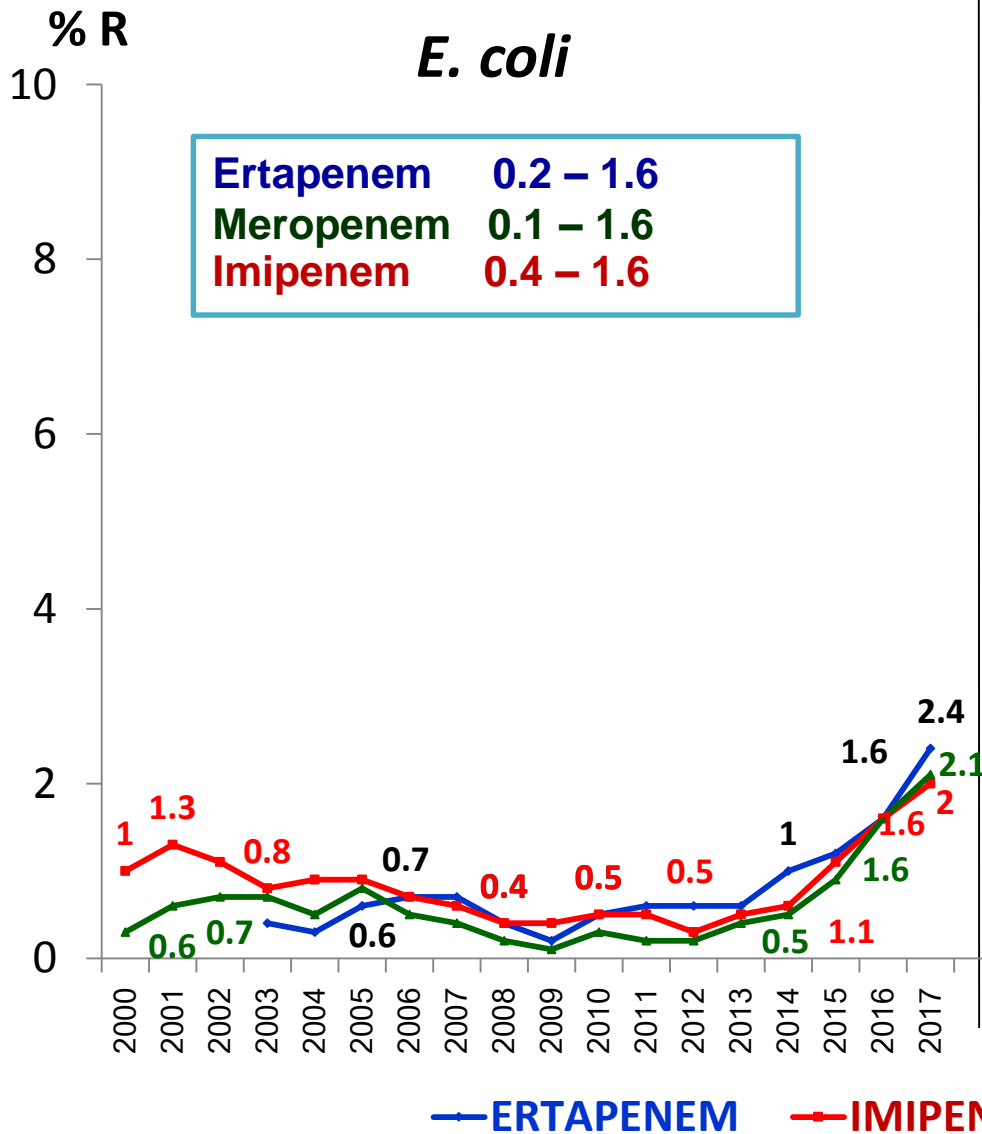
■ ESBL by screen test



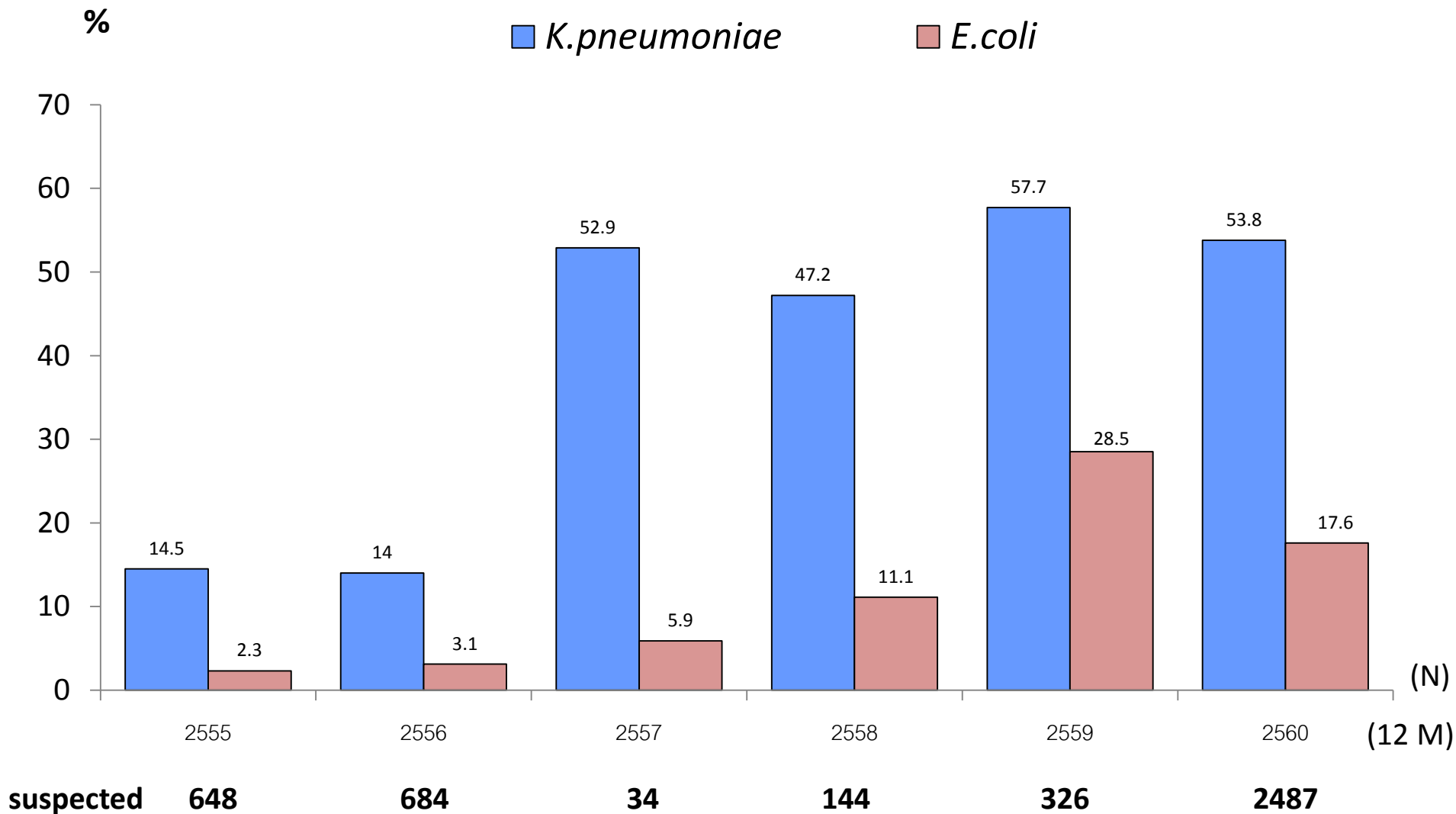
Percentage Resistance of *E. coli* and *K. pneumoniae*



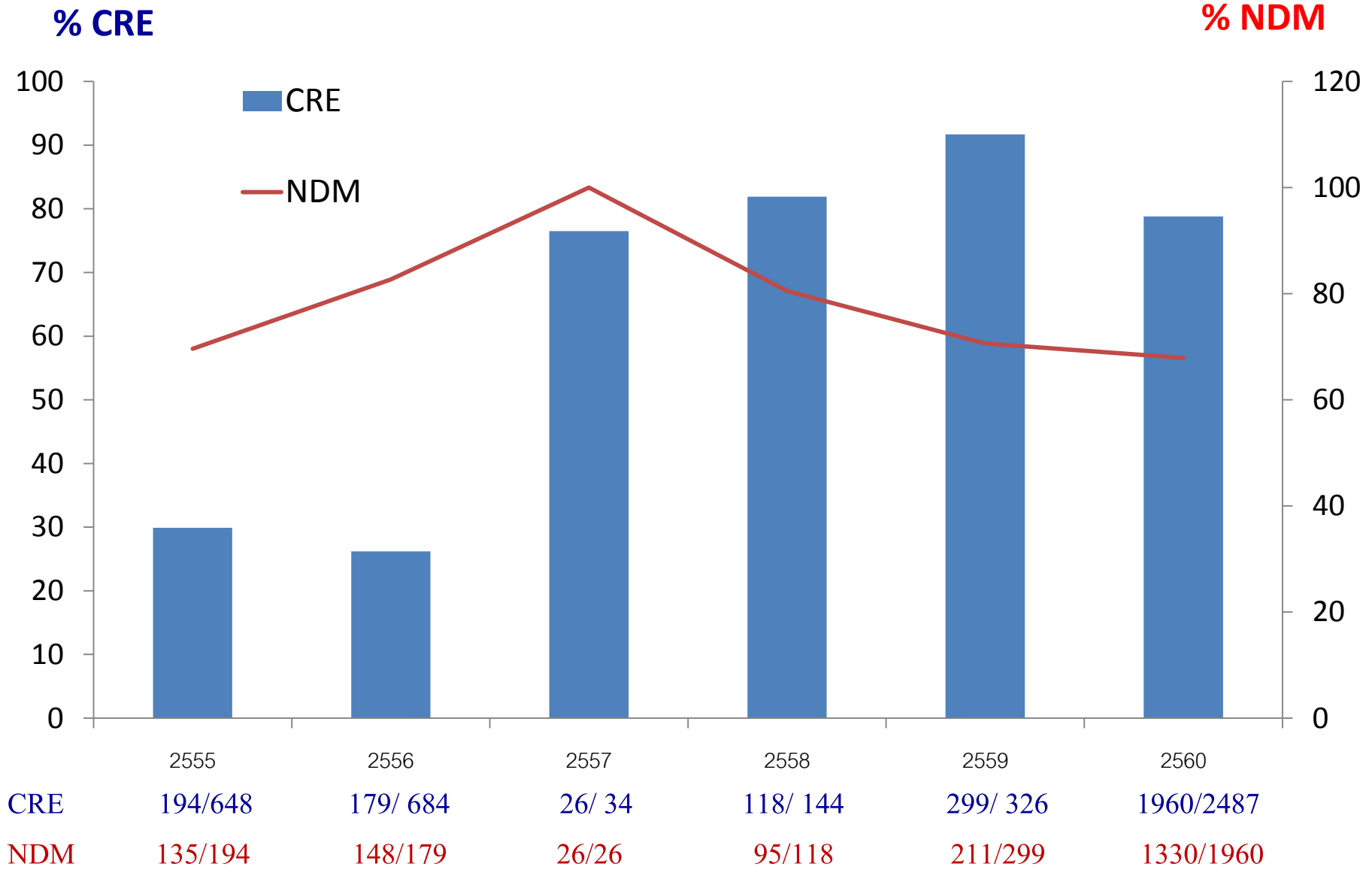
Carbapenem Resistance in *E. coli* and *K. pneumoniae*



Confirmation of Carbapenem Resistance in *K. pneumoniae* and *E. coli*

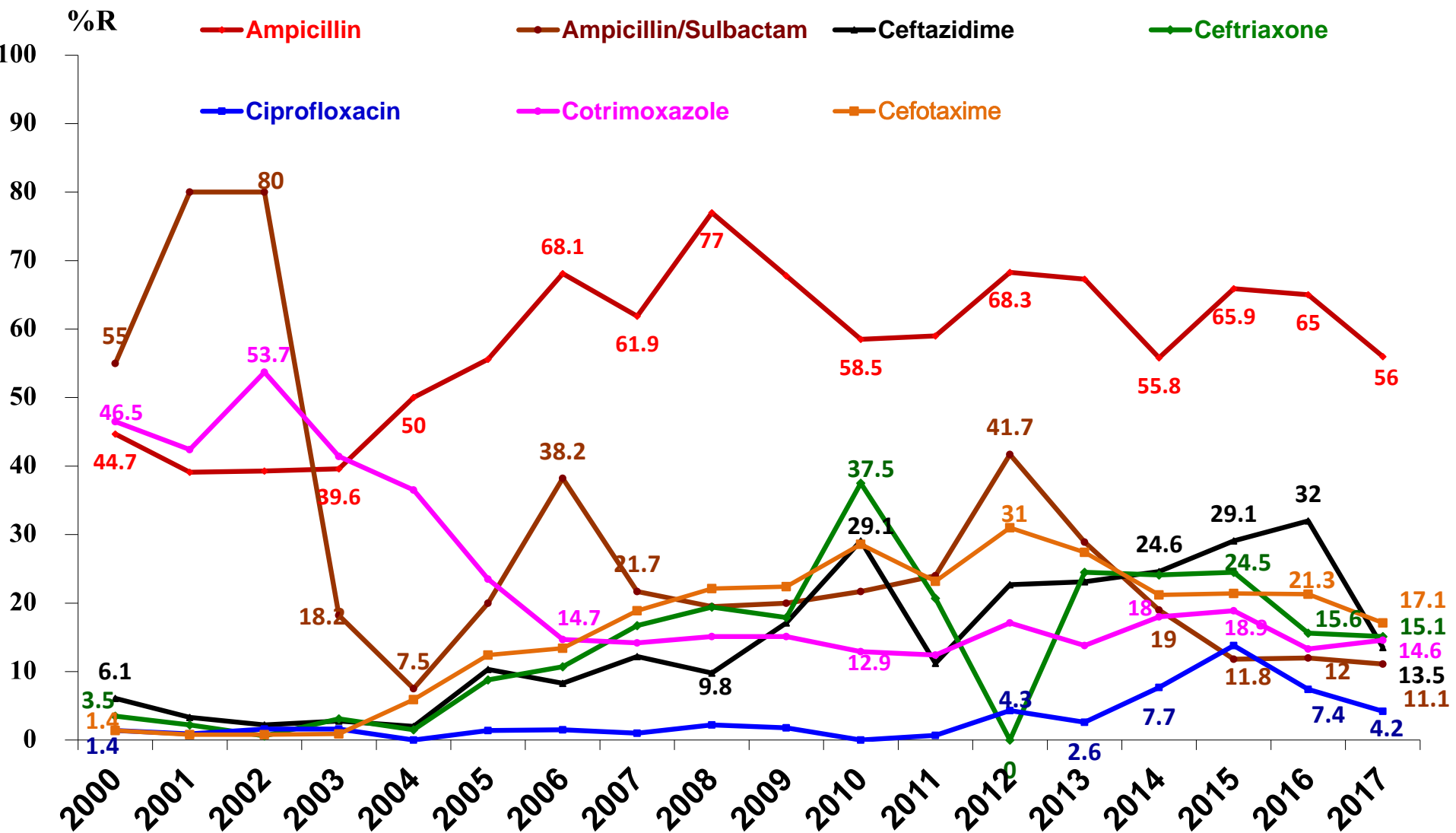


Confirmation of Carbapenem Resistance *Enterobacteriaceae*



2555	2556	2557	2558	2559	2560
CRE 194/648	179/ 684	26/ 34	118/ 144	299/ 326	1960/2487
NDM 135/194	148/179	26/26	95/118	211/299	1330/1960

Percent resistant of *Non-typhoidal Salmonella* isolated from Blood, 2000-2017



Percent resistant of *Non-typhoidal Salmonella* isolated from **Stool & Rectal swab**, 2000-2017

