

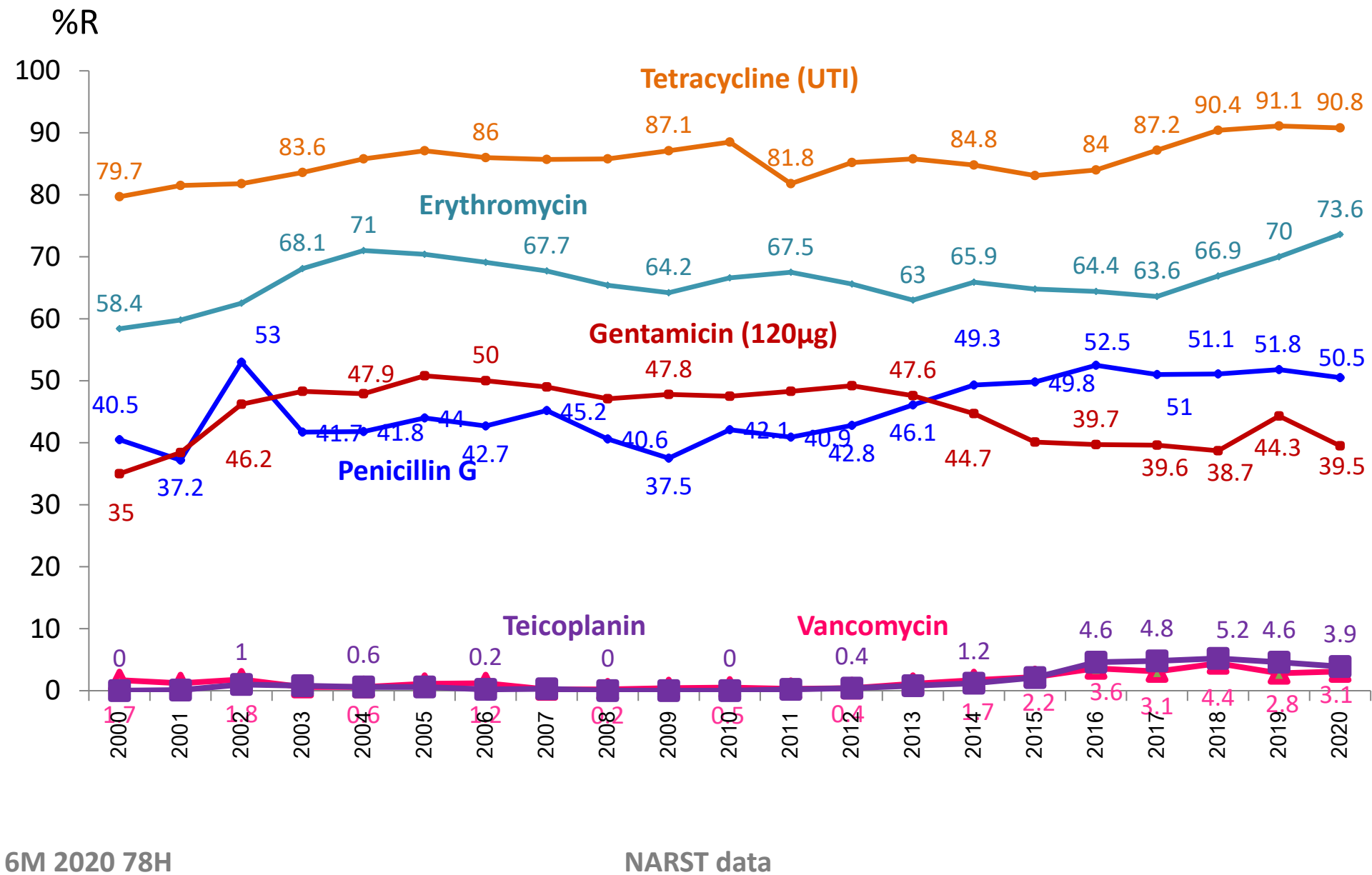
# สถานการณ์เชื่อด้อยาต้านจุลชีพ ปี 2000-2020(6M)

ศูนย์เฝ้าระวังเชื่อด้อยาต้านจุลชีพแห่งชาติ (NARST)  
สถาบันวิจัยวิทยาศาสตร์สาธารณสุข กรมวิทยาศาสตร์การแพทย์

<http://narst.dmsc.moph.go.th>

# Antimicrobial Resistance rates of *Enterococcus* spp. by year

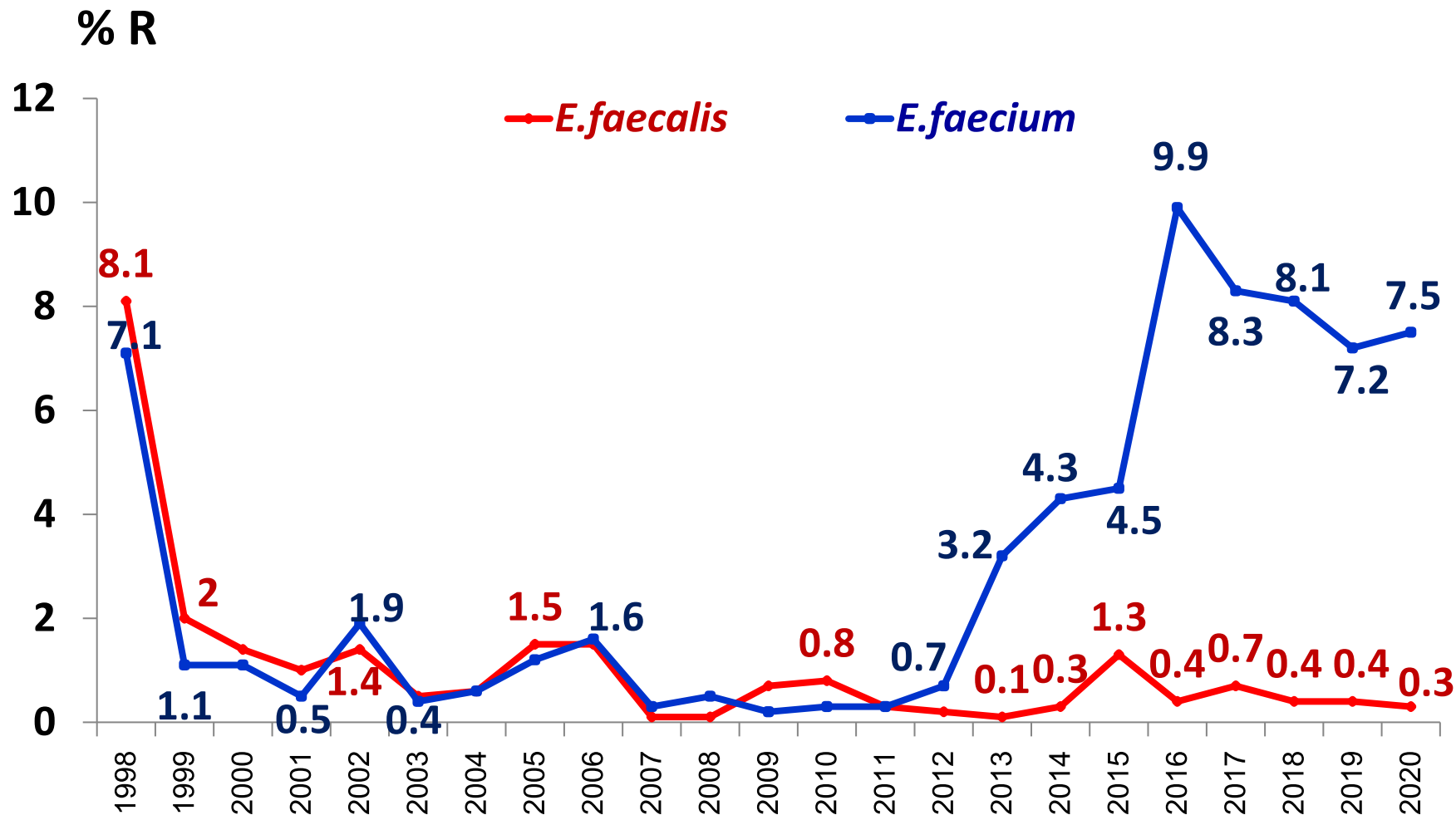
(NARST - 78 hospitals, 6M 2020)



6M 2020 78H

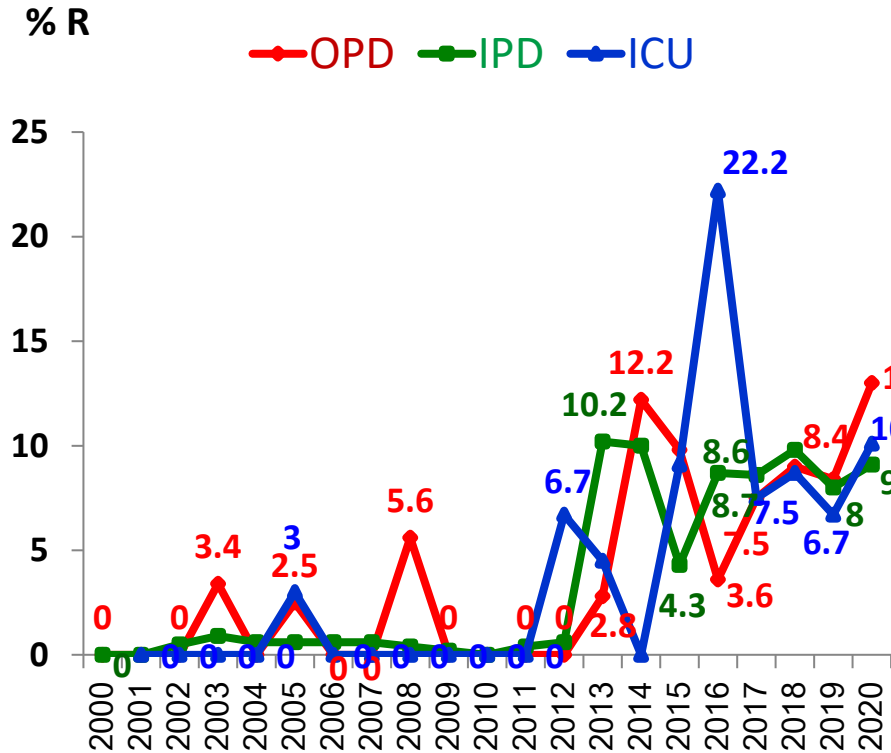
NARST data

# Rate of vancomycin resistant enterococci



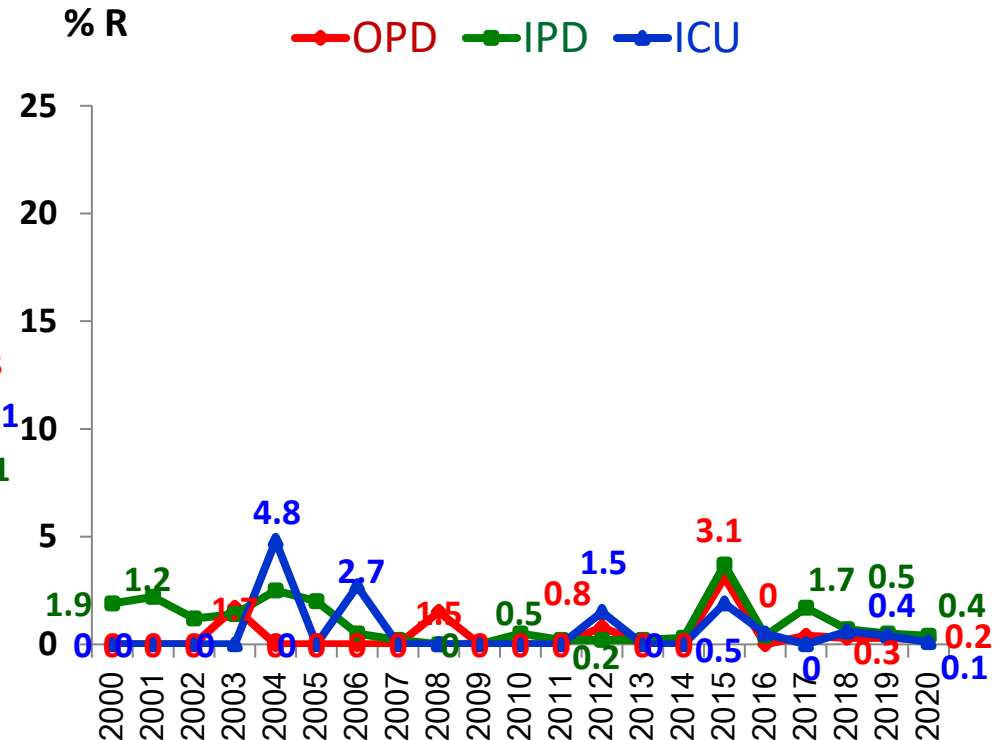
# Percent resistance of *E. faecium*, *E. faecalis* to vancomycin

*E. faecium*



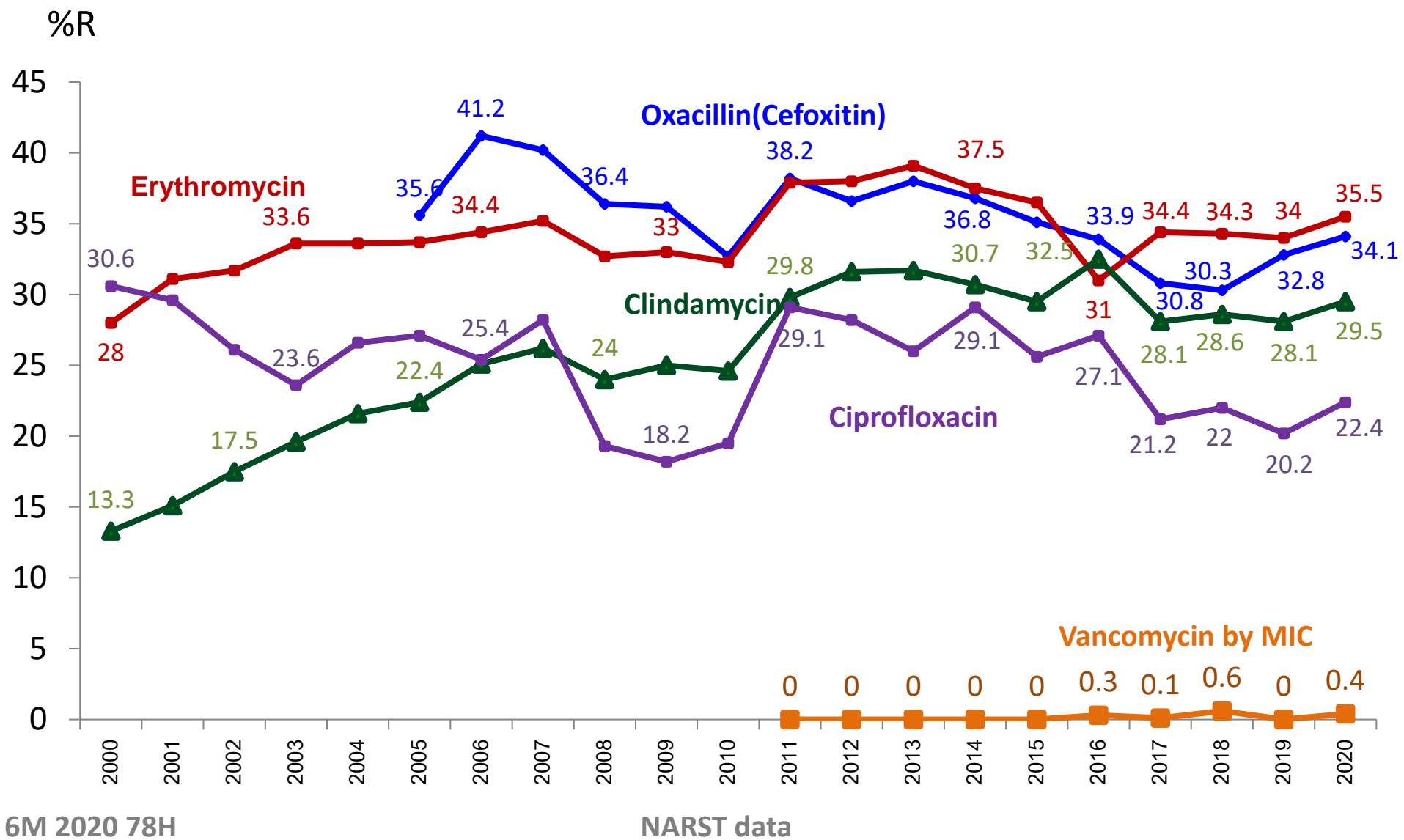
Vancomycin

*E. faecalis*

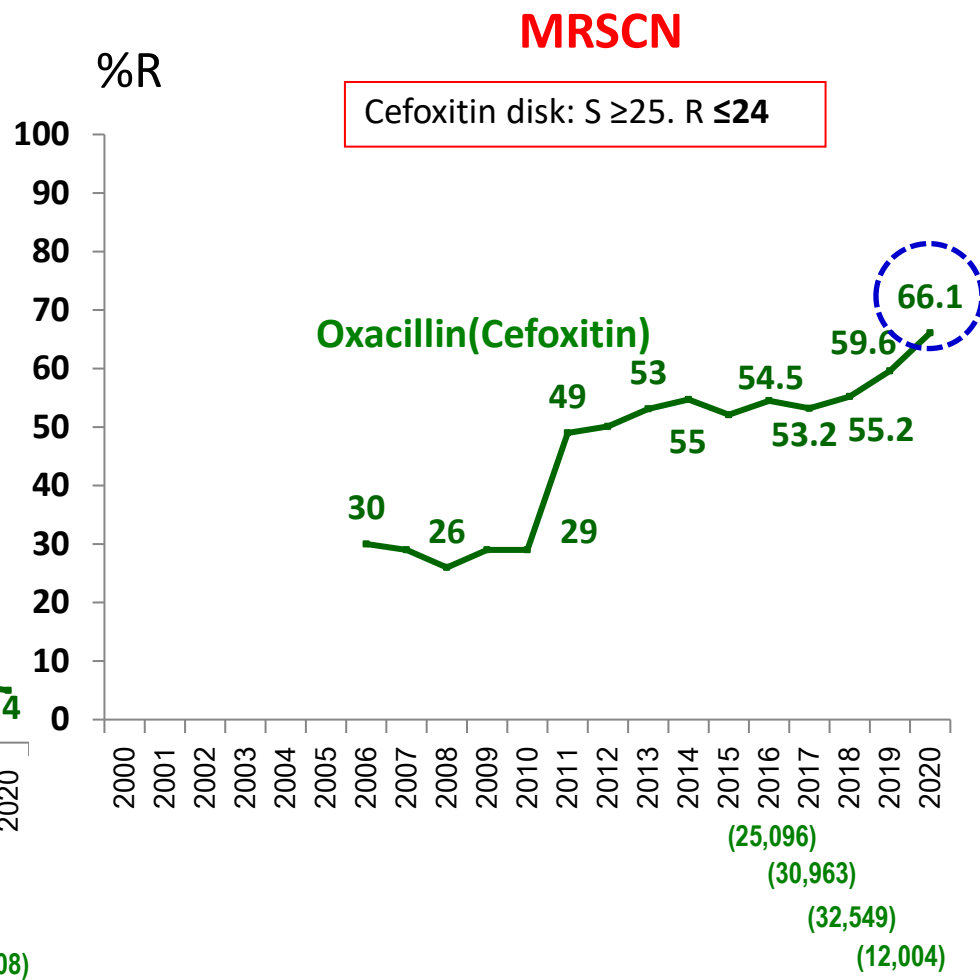
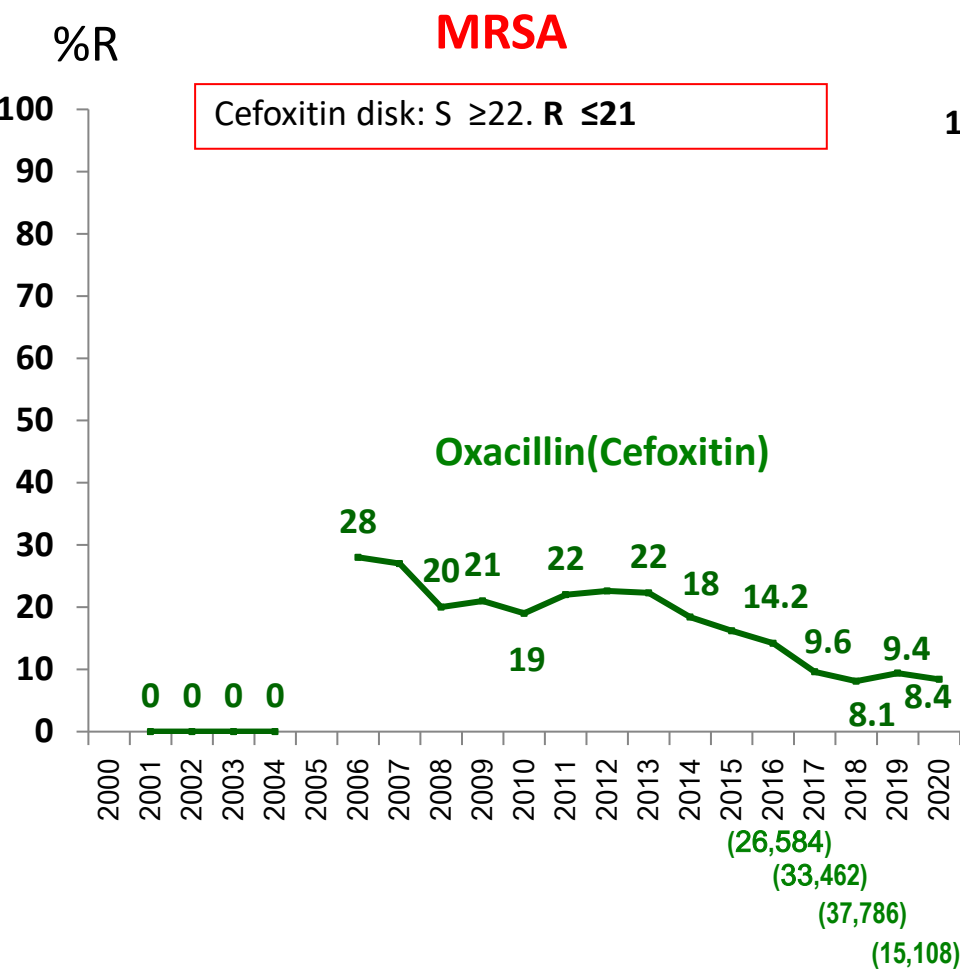


Vancomycin

# Antimicrobial Resistance rates of *Staphylococcus spp.* by year (NARST - 78 hospitals, 6M 2020)

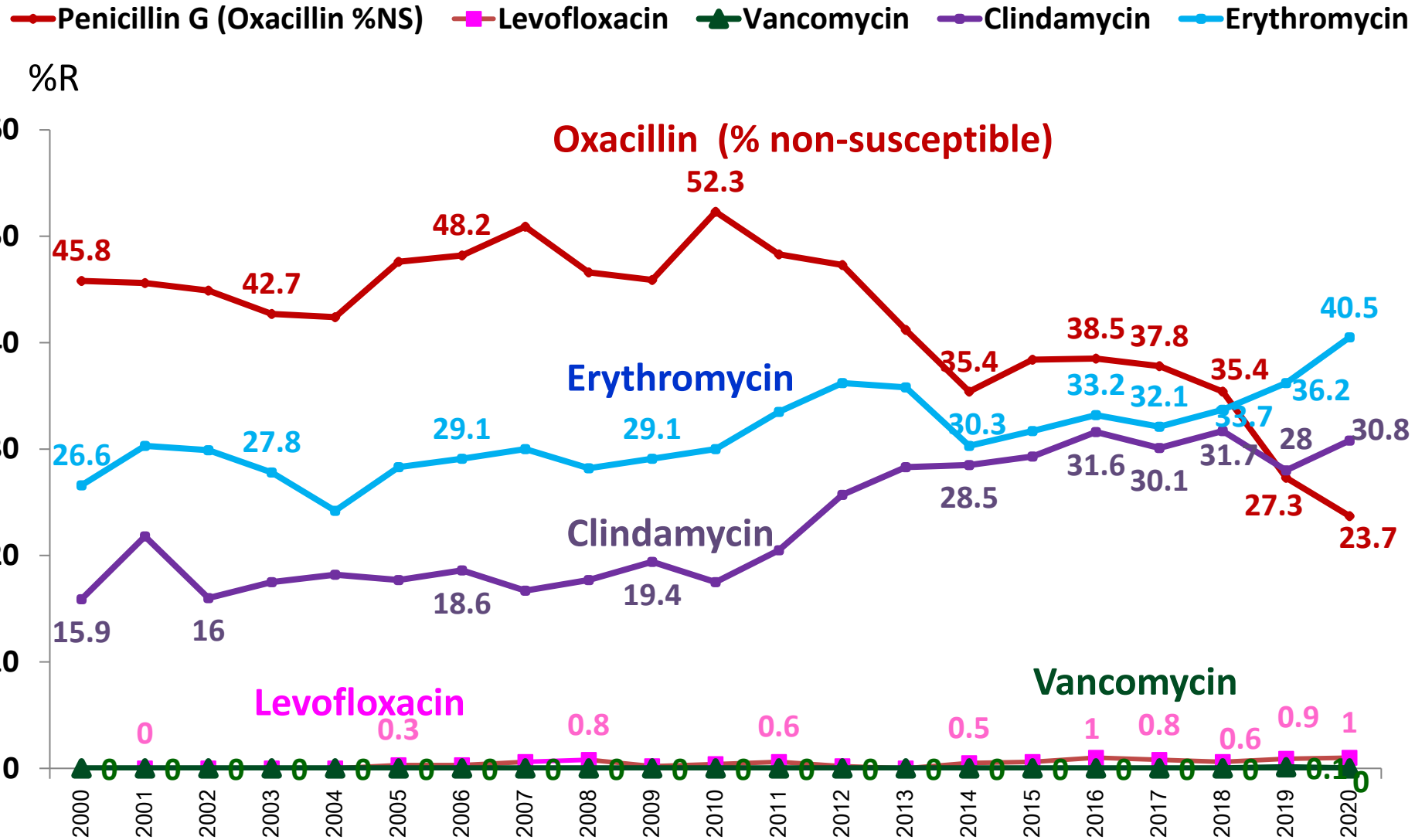


# Percent isolates of Methicillin Resistance *S. aureus* (MRSA) and Methicillin Resistance *Staphylococcus* coagulase negative (MRSCN)



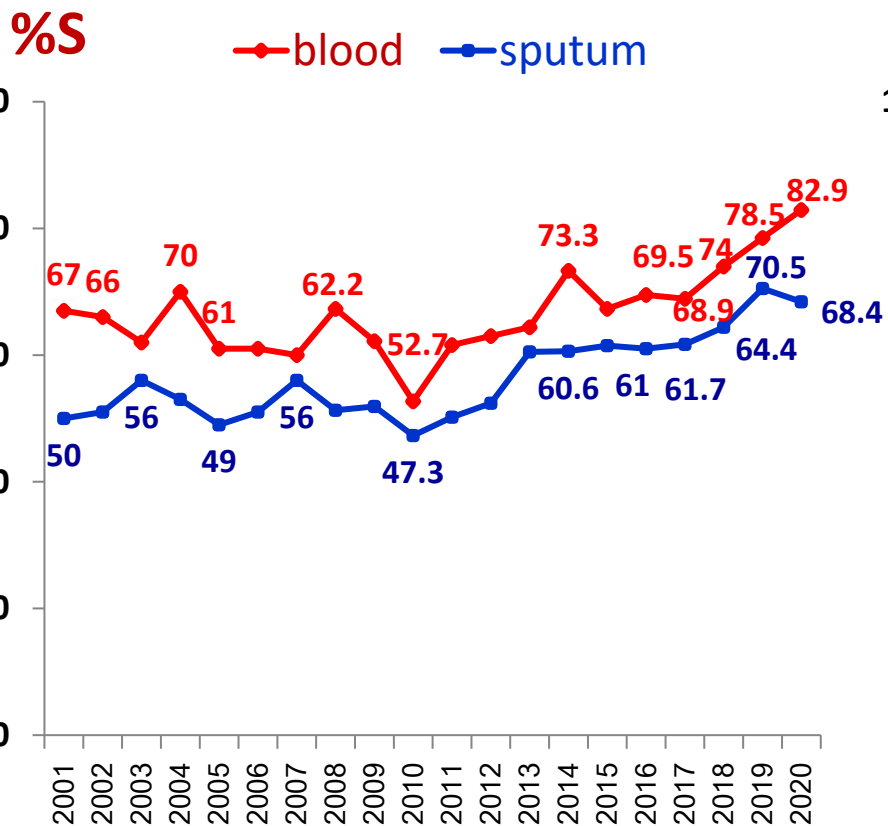
# Antimicrobial Resistance rates of *S. pneumoniae* by year

## (NARST - 78 hospitals, 6M 2020)

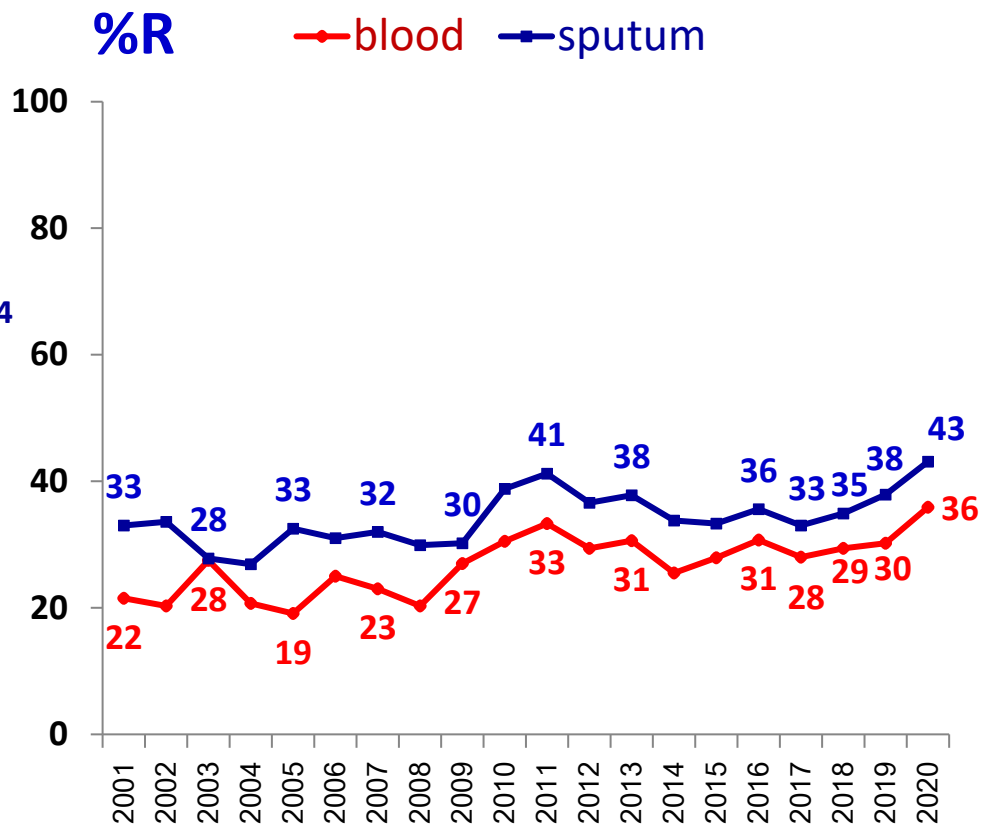


# Susceptibility of *S. pneumoniae* by specimen

## Penicillin G (Oxacillin)



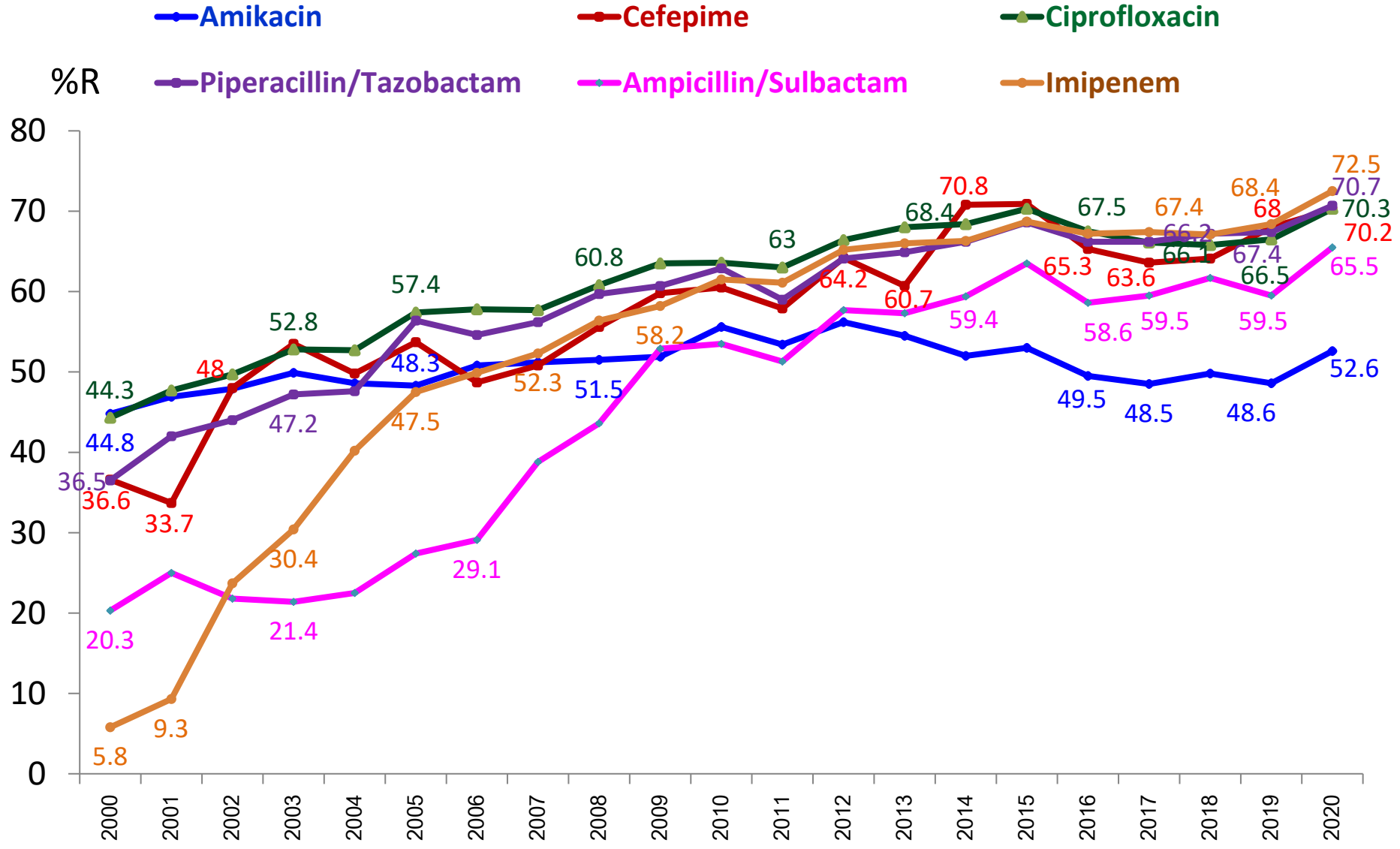
## Erythromycin





# Antimicrobial Resistance rates of *Acinetobacter* spp. by year

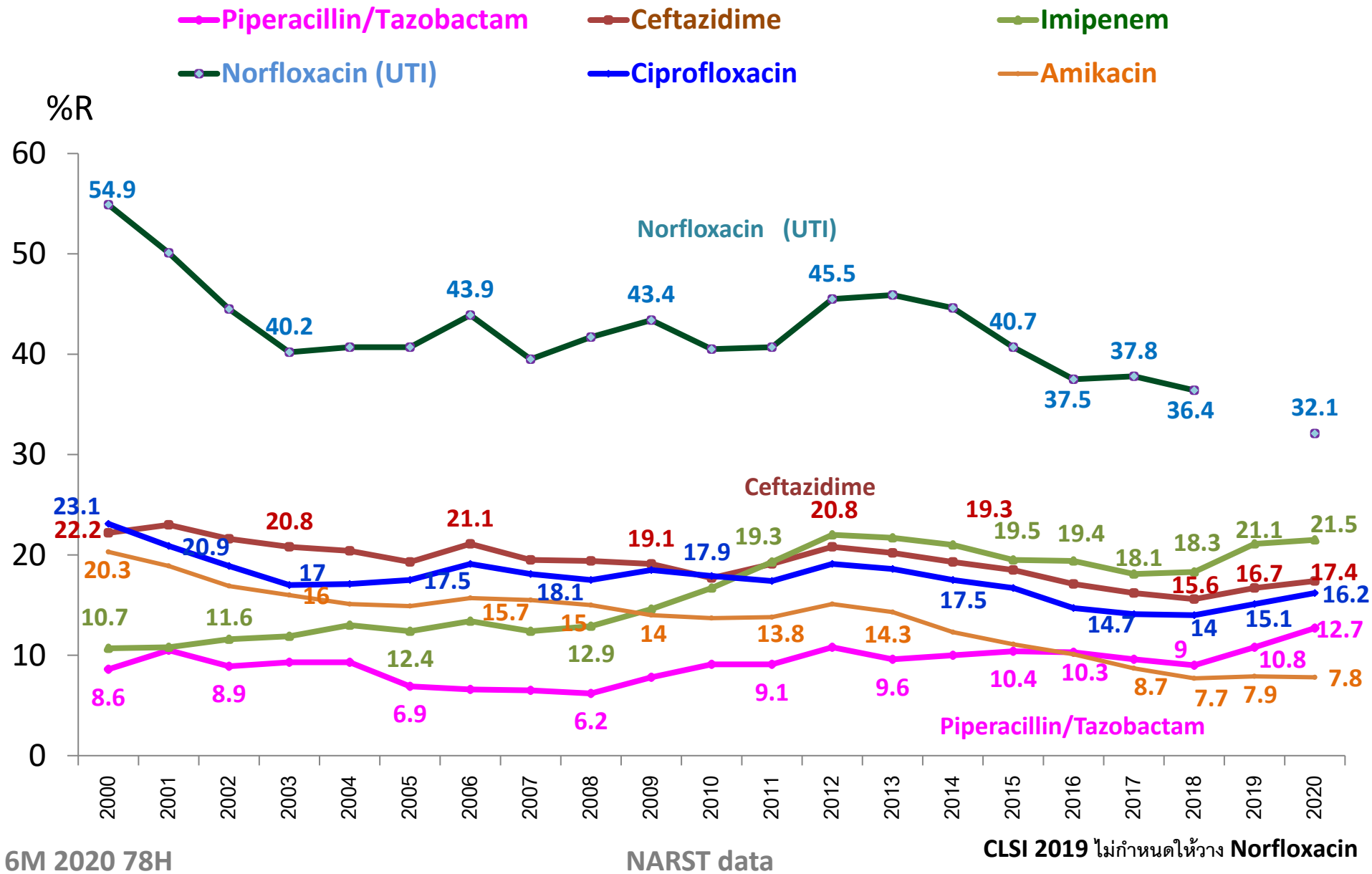
## (NARST - 78 hospitals, 6M 2020)



6M 2020 78H

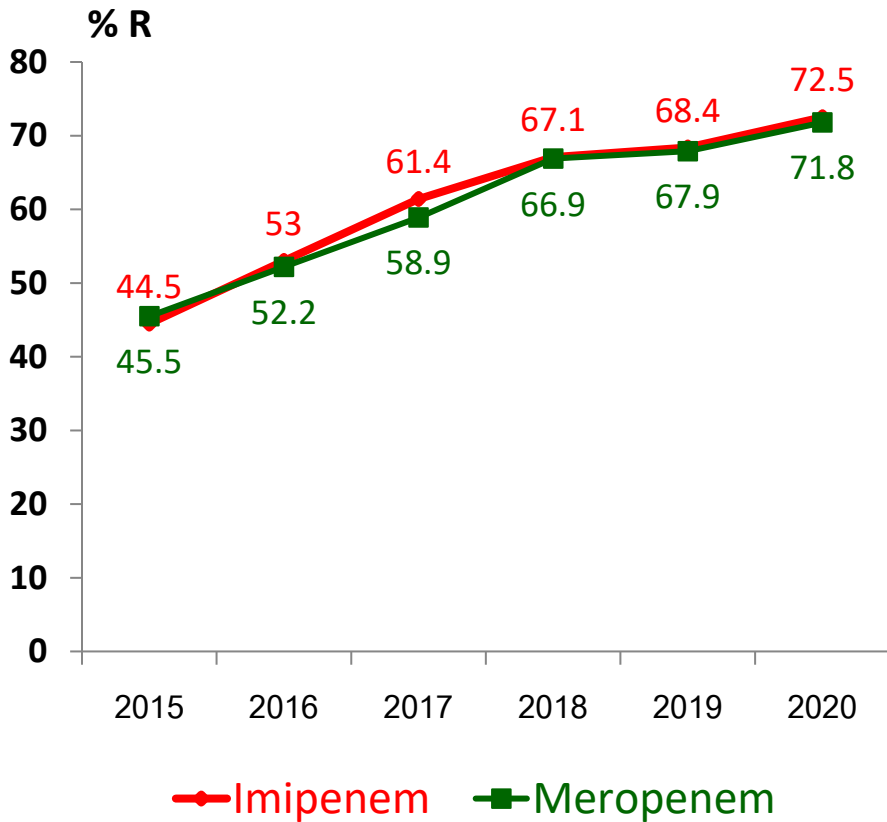
NARST data

# Antimicrobial Resistance rates of *P. aeruginosa* by year (NARST - 78 hospitals, 6M 2020)

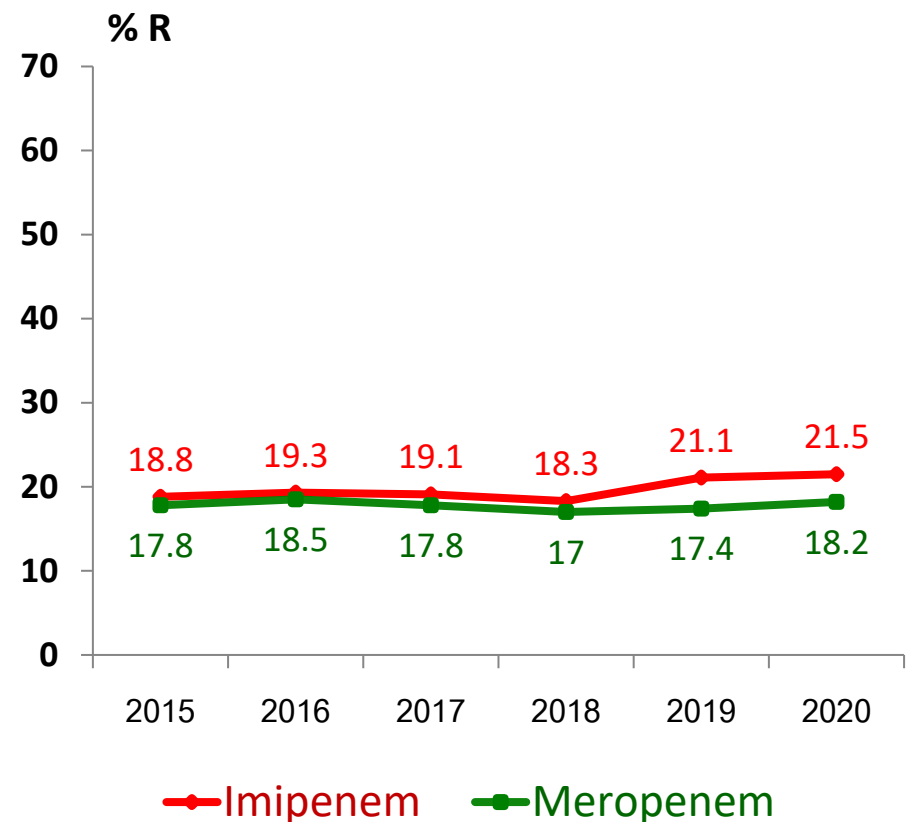


# Carbapenem Resistance in *Acinetobacter* spp. and *Pseudomonas aeruginosa*

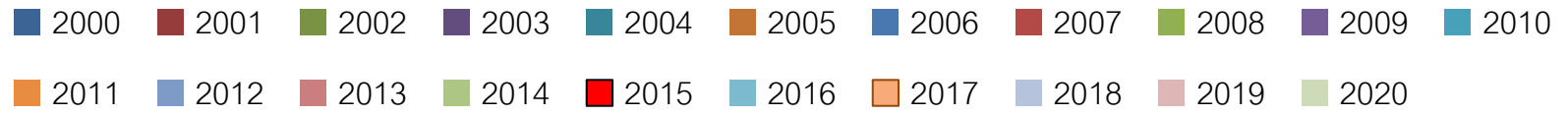
## *Acinetobacter* spp.



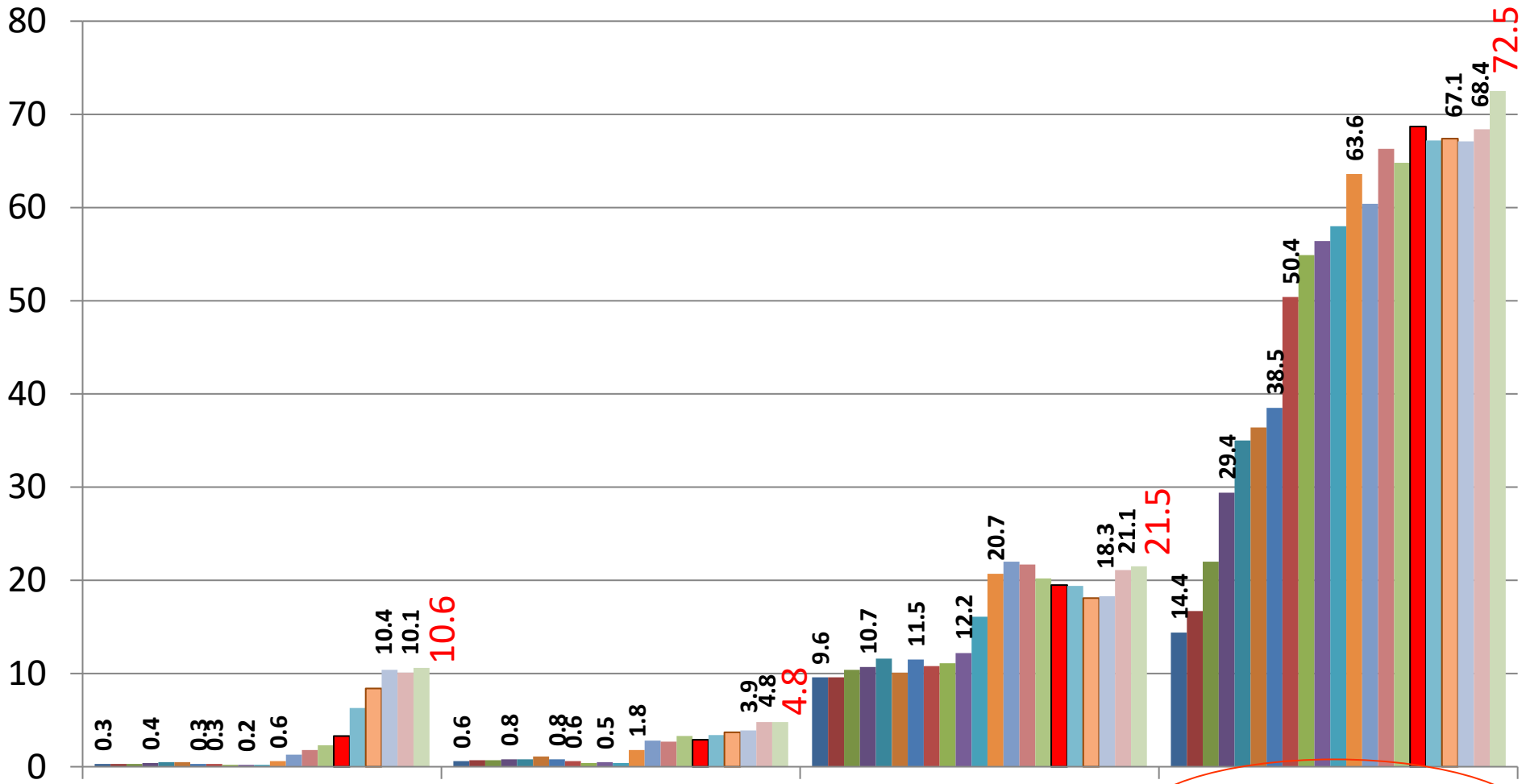
## *Pseudomonas aeruginosa*



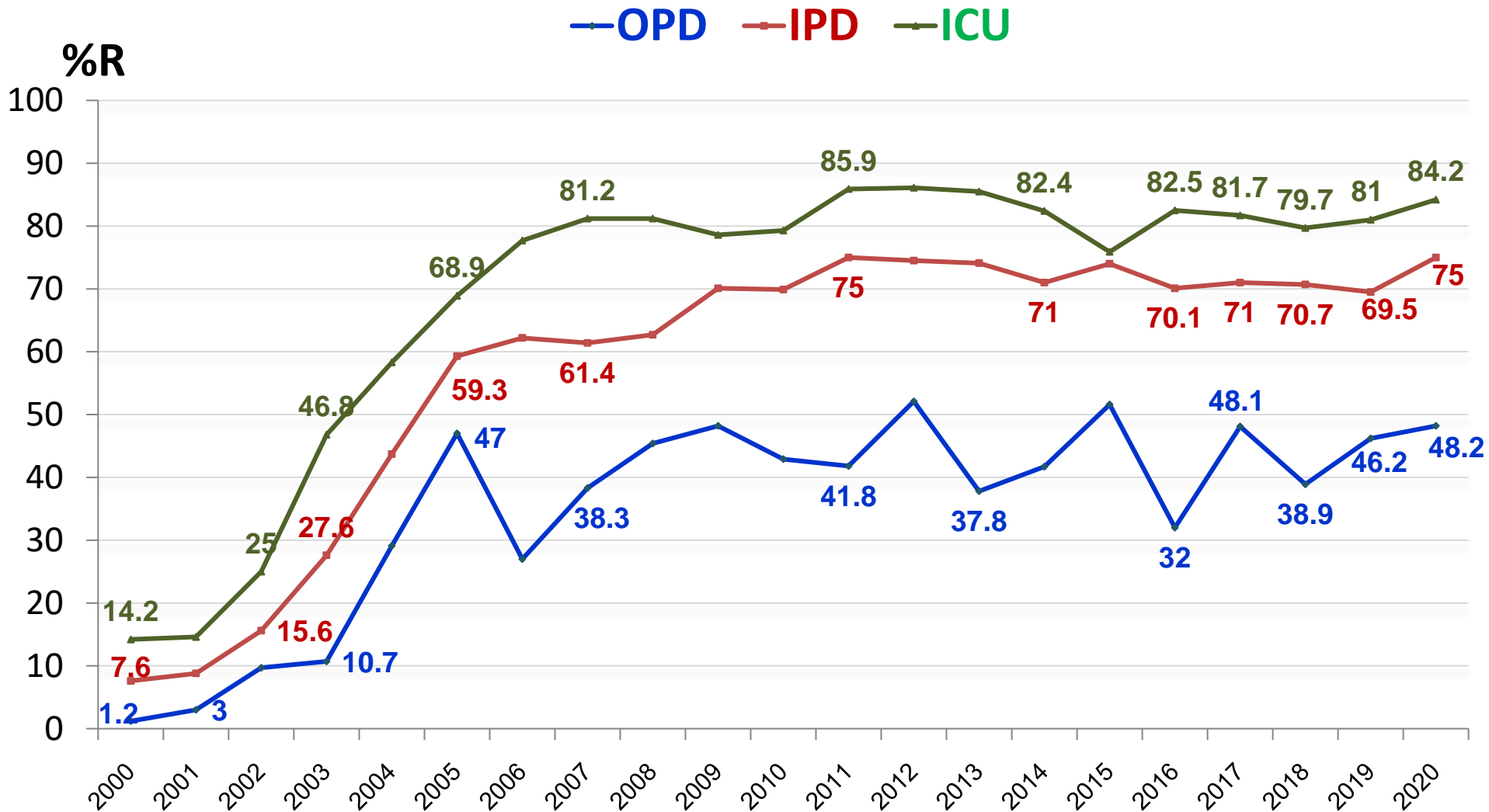
# Rate of Imipenem Resistant *Acinetobacter* spp.



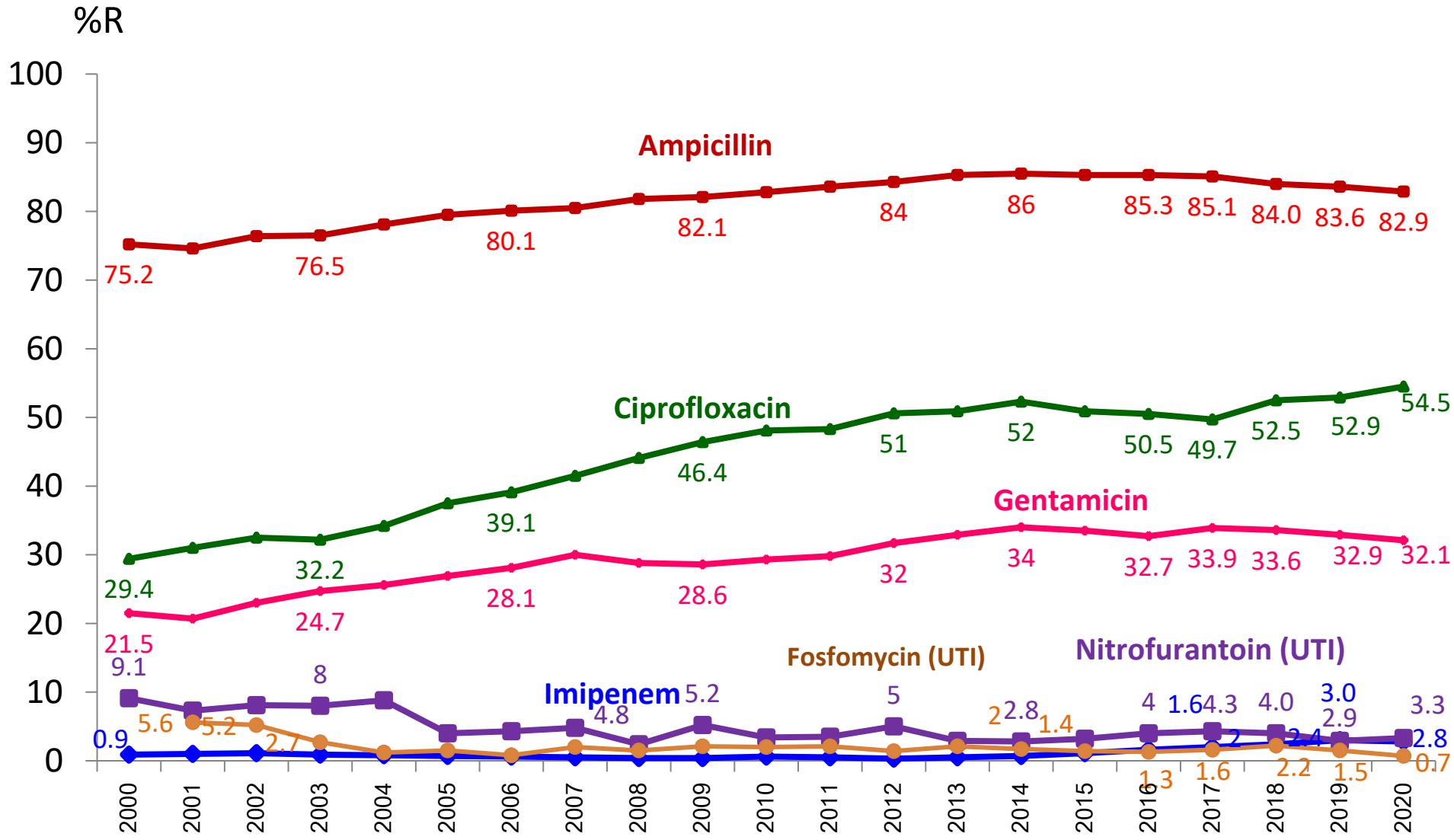
% R



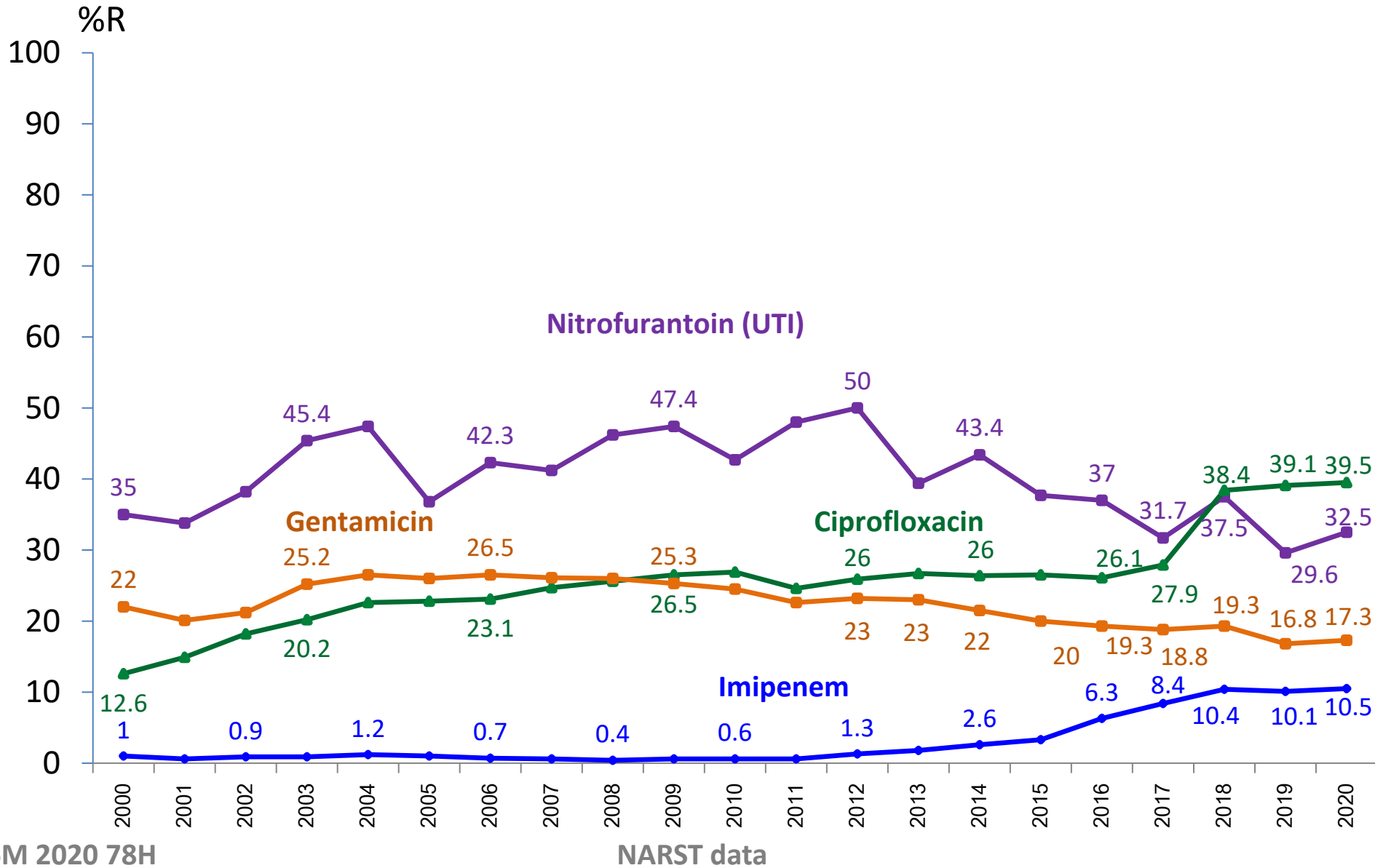
# Percent resistance of *A. calcoaceticus*-*baumannii* complex to Imipenem



# Antimicrobial Resistance rates of *E. coli* by year (NARST - 78 hospitals, 6M 2020)



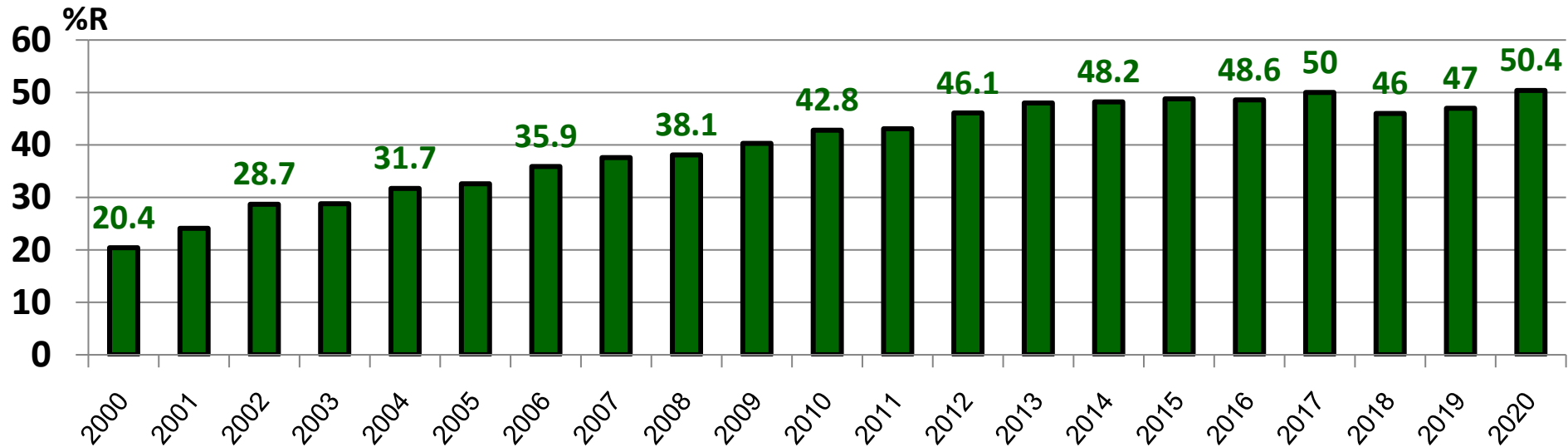
# Antimicrobial Resistance rates of *K. pneumoniae* by year (NARST - 78 hospitals, 6M 2020)



# ESBL producing *E. coli*

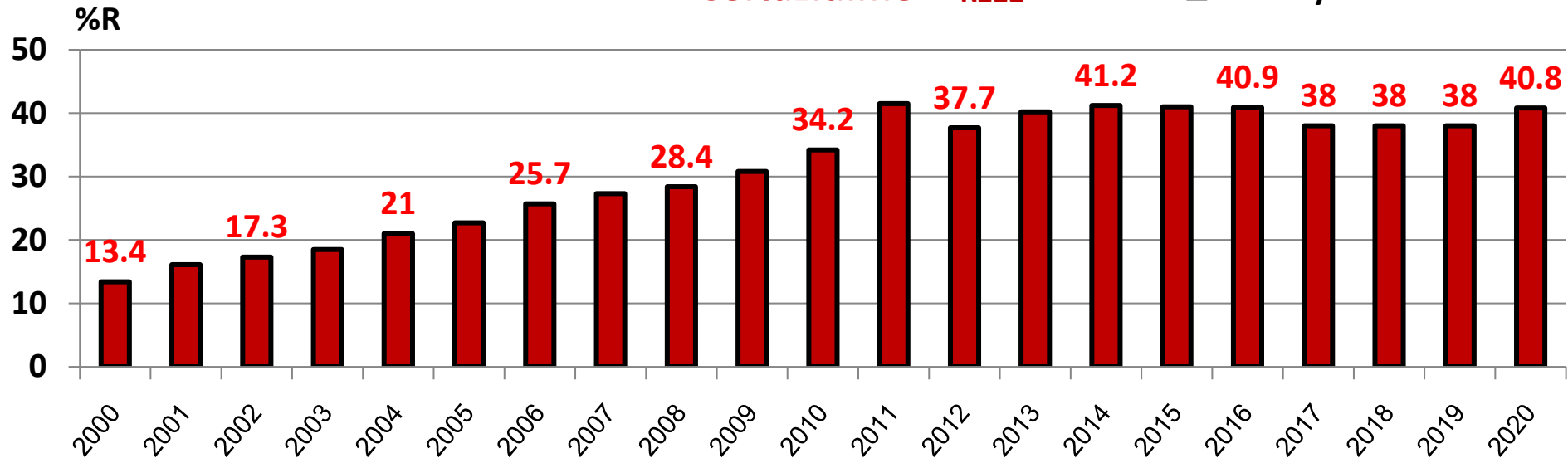
Cefotaxime R<sub>≤27</sub>

■ ESBL by screen test



Ceftazidime R<sub>≤22</sub>

■ ESBL by screen test

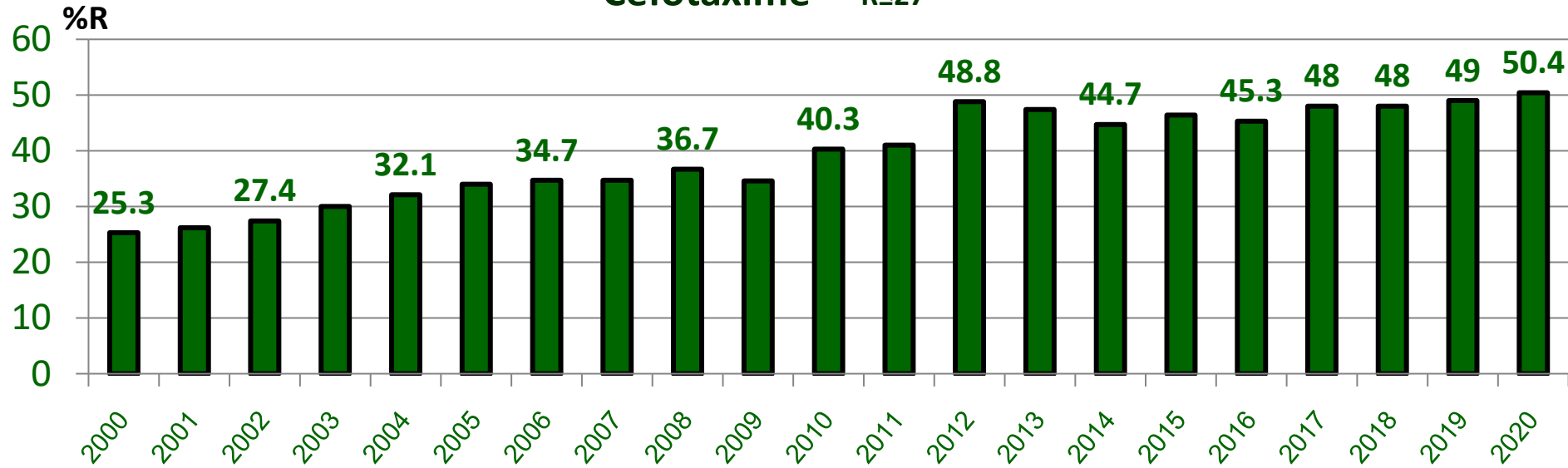




# ESBL producing *K. pneumoniae*

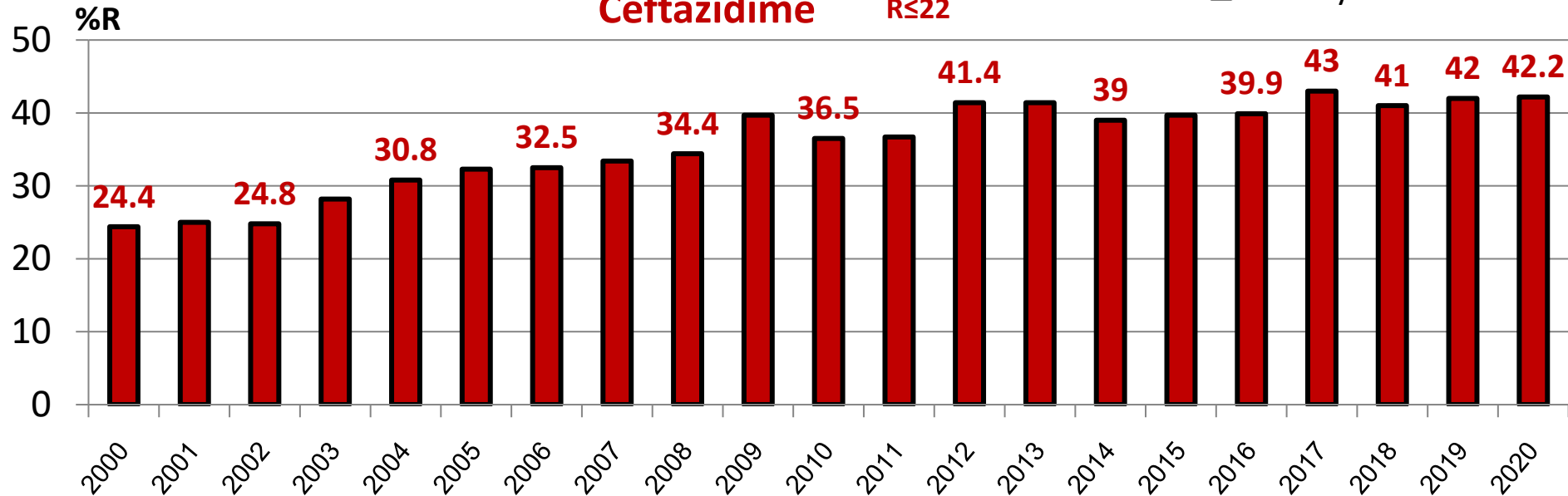
## Cefotaxime R<sub>s</sub>≤27

■ ESBL by screen test

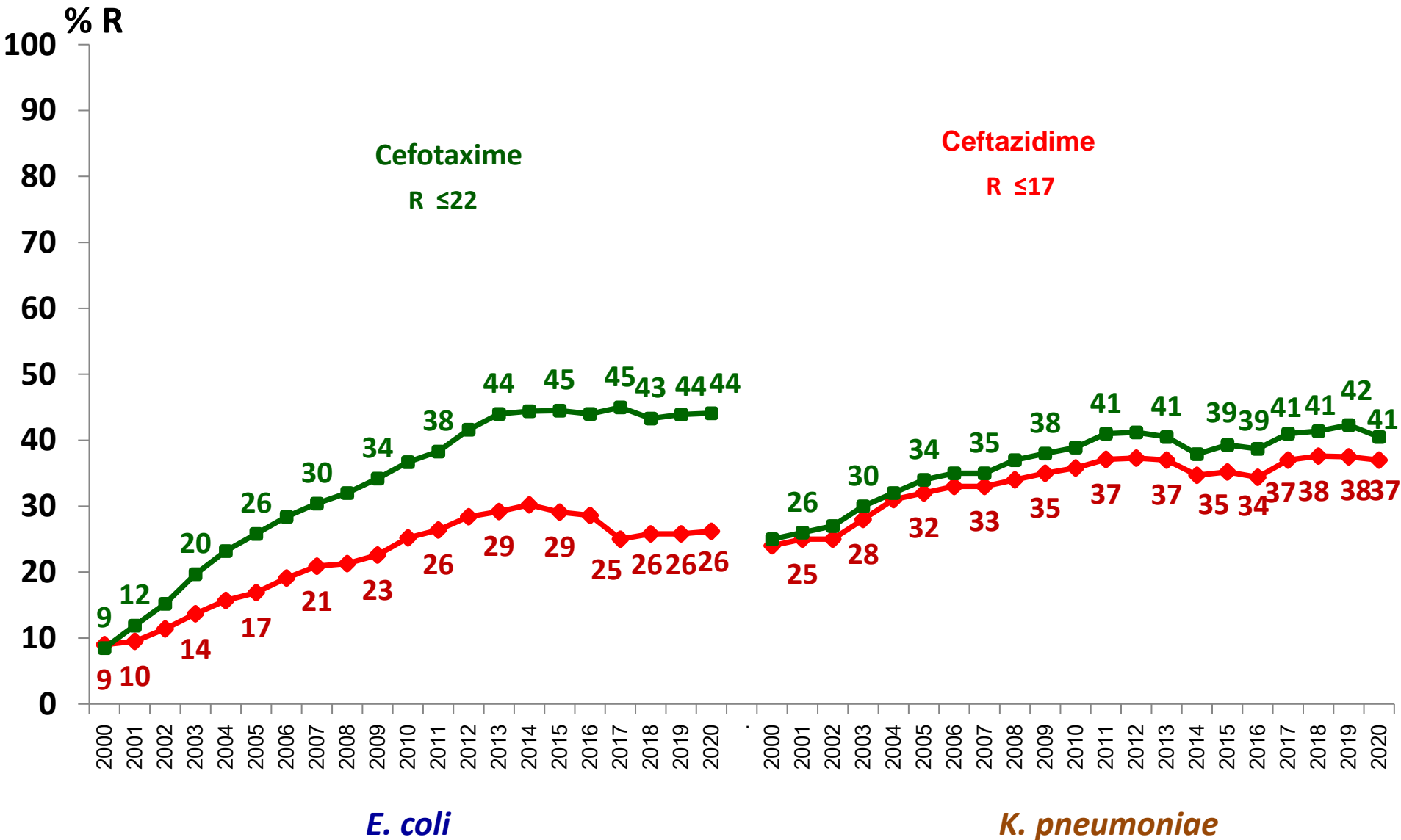


## Ceftazidime R<sub>s</sub>≤22

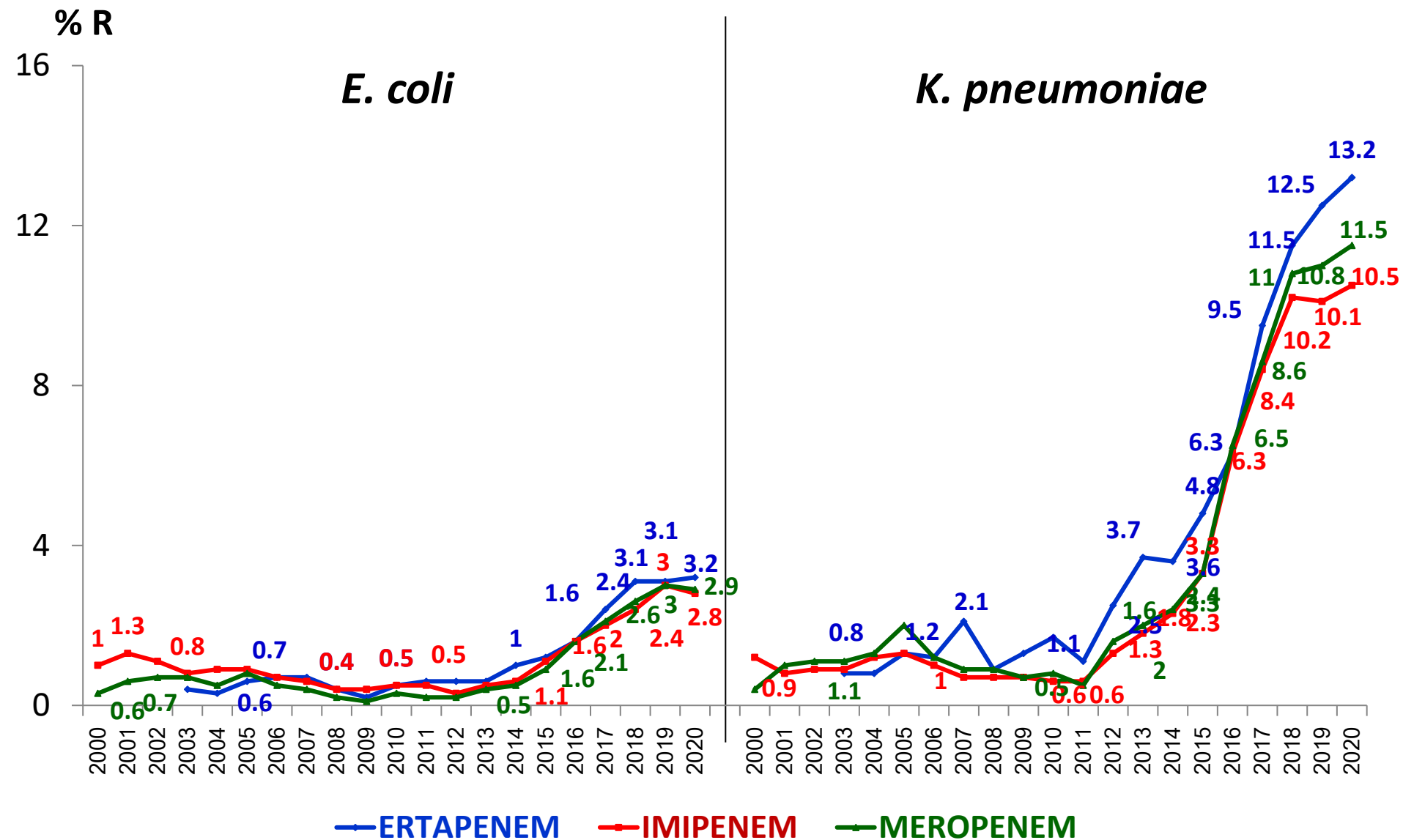
■ ESBL by screen test



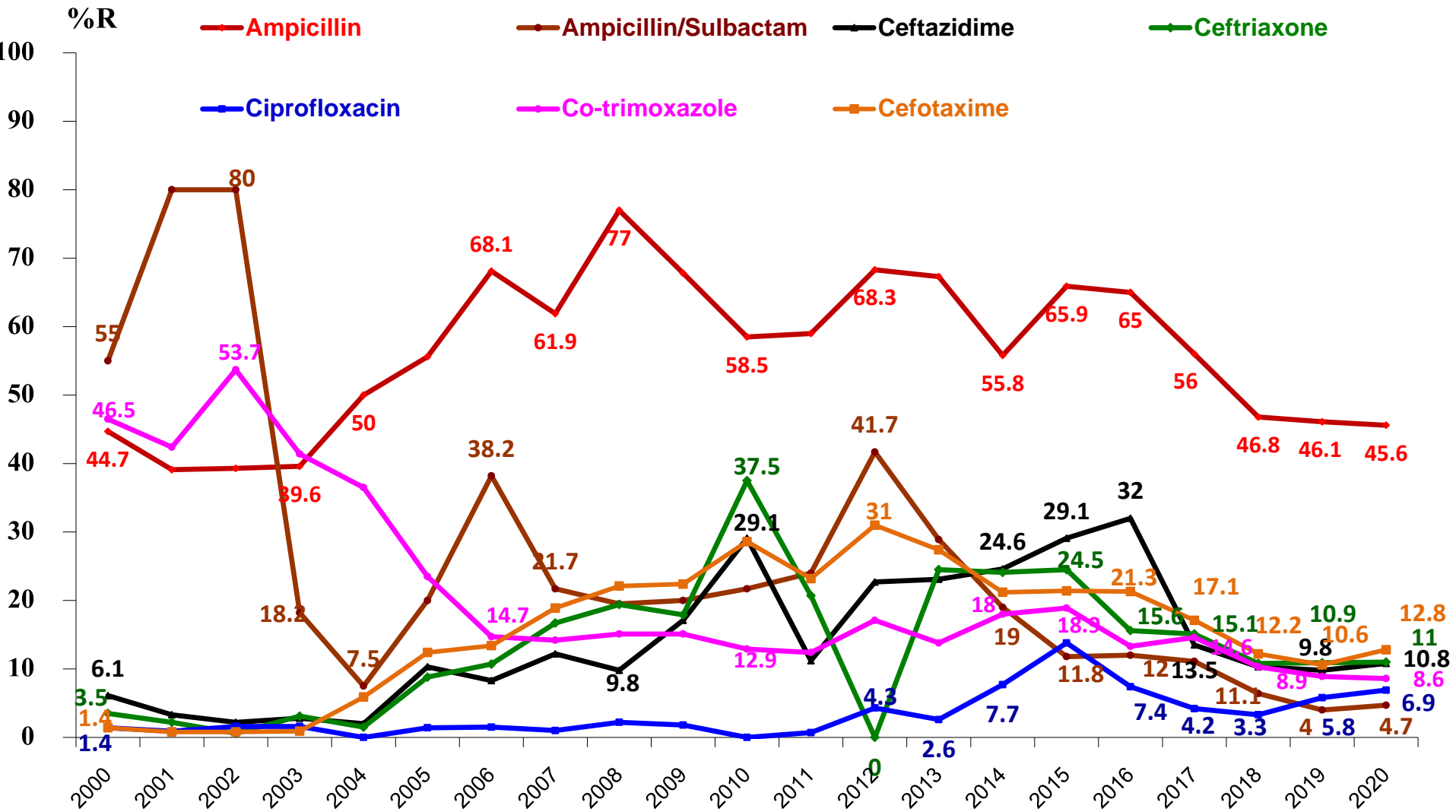
# Percentage Resistance of *E. coli* and *K. pneumoniae*



# Carbapenem Resistance in *E. coli* and *K. pneumoniae*



# Percent resistant of **Non-typhoidal Salmonella** isolated from **Blood**, 2000-2020 (6M)



# Percent resistant of **Non-typhoidal *Salmonella*** isolated from **Stool & Rectal swab, 2000-2020 (6M)**

%R

